

# Footprints

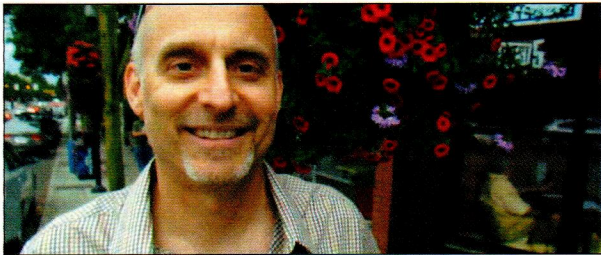
on the sands of time ...

Find yourself in group photo  
of totem-pole unveiling! Pages 4-5

ISSUE LXXXVIII

SOUTHWEST SEATTLE HISTORICAL SOCIETY (WWW.LOGHOUSEMUSEUM.INFO)

FALL 2014



West Seattle broadcaster Marty Riemer will interview a panel of six national music luminaries about why they live in West Seattle.

## What a Gala!

**H**ave you purchased your tickets yet for our **Champagne Gala Brunch**? Don't wait long: The early-bird deadline for \$75 tickets is **Wednesday, Oct. 8, 2014**. Here's what's in store:

- **Music-scene panel** hosted by **Marty Riemer**, asking luminaries why they live in West Seattle.
- Presentation by three **Schmitzes** on the family's West Seattle legacy of civic duty and gratitude.
- **Golden Ticket Drawing** to win a totem-pole cruise for two to Alaska aboard the *mv Westerdam*.
- **Totem Red and Totem White wine and Totem Breakfast Blend coffee** for purchase.
- Inspiring **Live Auction** surprises.

Order tickets and get event details by calling **206-938-5293** or visiting [www.loghousemuseum.info](http://www.loghousemuseum.info).

For info on sponsors, see the back page!

*Totem graphic in invitation (right) by Kelsey Green*



(From left) Vicki Schmitz-Block, her son Dietrich Schmitz and her daughter Julie Schmitz Broker will speak about their family's indelible legacy of civic duty and gratitude.

# Rebirth!

## Celebrating Restoration of the Admiral Totem Pole

2014  
Champagne  
Gala Brunch  
Saturday, November 8, 2014  
11 AM to 2:30 PM  
Salty's on Alki





**FOOTPRINTS**

is the official publication of the Southwest Seattle Historical Society.

**Editor**

Clay Eals

Printing thanks to

**Where to find us**

The Southwest Seattle Historical Society's home is the "Birthplace of Seattle" Log House Museum.

**Address**

3003 61st Ave. SW  
Seattle, WA  
98116-2810  
(one block south of Alki Beach)

**Museum hours**

noon-4 p.m.  
Thursday-Sunday

**Phone**

206- 938-5293

Clay Eals' cell:  
206-484-8008

**E-mail**

Clay Eals,  
executive director:  
clay.eals@loghouse  
museum.info

Sarah Baylinson,  
museum manager:  
sarah.baylinson  
@loghouse  
museum.info

**Want to volunteer?**

Call or e-mail us!

**Website**

www.loghouse  
museum.info

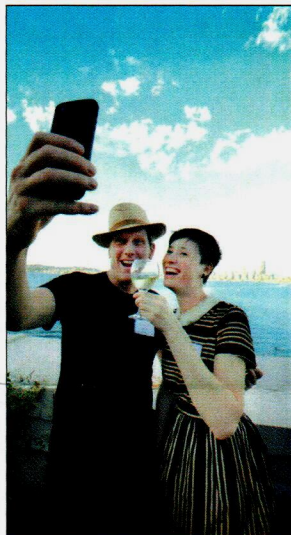
**'Like' us on Facebook**

Log House Museum

# The sky's the limit

**W**hen I look back on our June 6 totem ceremony, what comes to mind is a scene that brings me a grin and deep joy. No, it's not my emcee's-eye view of the 1,300 people witnessing the unveiling. Instead, it's a scene that kept repeating itself afterward, on nearly every day over the summer.

It's of one or more children, hand in hand with parents or other relatives, strolling along the sidewalk next to our museum, stopping at the beautifully restored pole, raising their gaze, pointing at the totem characters and recounting the event with awe. Each time, on their lips or in their minds has nestled a profound, three-word statement: "I was there."



Bobby Whittaker and Aurora Bennett frame themselves with the Seattle skyline at our Gala Preview Party at The Pacific Institute on Harbor Avenue. Join them and others at the Nov. 8 Gala! (Photo by Patrick Robinson, West Seattle Herald)

What more powerful gift of heritage can we give future generations? There is no guarantee, but I bet that most of the 900 elementary students at the unveiling will recall the experience well into their twilight years, each walking by the pole and sharing with their grandchildren those three magical words.

**Getting there**

How is such a thing made possible? We need only look to the classic three T's: time, talent and treasure. These are the gifts brought by each of you -- you who have volunteered your time, who have lent your



Children, teachers and parents react at the precise moment the pole is unveiled on June 6, 2014. (Photo by Jeff Anderson)

expertise, who have contributed crucial dollars -- to fulfill our mission: promoting local heritage through education, preservation and advocacy.

**A wealth of ways**

You have the opportunity to keep this magic alive. It's our Champagne Gala Brunch on Saturday, Nov. 8, at Salty's on Alki. There, you will discover a wealth of ways to get inspired by what we all have done and hope to do in the decades to come. Please join us. (See page 1 and our website for details.)

It's no accident that the Gala theme of "Rebirth" is directly tied to our totem pole. A potent symbol to link our past to our future, it allows us to embrace and enhance our community -- and to feel the warmth of hope while the child within us looks to the sky.

Clay Eals, executive director

## In our 30th year, we are grateful to all: past, present and future!

**H**ello, members and friends! Welcome to this lovely fall. We have an exciting lineup of activities, and I hope you can participate in some or all of the events. Please check out the calendar on the back page.

It is so important to our membership that this is the 30th anniversary of the Southwest Seattle Historical Society. Founded by visionaries such as **Elliott Couden** and **Joan Mraz**, our organization has grown in many ways, all because of members and volunteers, including you, contributing both in-kind



and with direct dollars. We are grateful to all: past, present and future!

As we mark the 30th anniversary with our Annual Meeting on **Saturday, Nov. 15**, I invite you to come celebrate and commemorate our founding and our future. We will have a special memorial to honor **Joan Mraz**, who passed away on Feb. 24, and founding board member **Jerry Robinson**, who passed away on May 26.

Of course, we also will vote to elect new officers and fill vacant board positions. If you are interested, or know of anyone interested, in becoming an officer or trustee, please contact me for further information at marcyjohnsen@comcast.net.

I look forward to seeing you soon!

Marcy Johnsen, board president

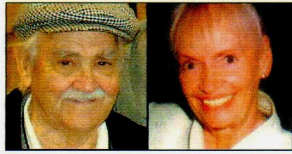
We deeply appreciate the financial support of:





# Help us honor founders Nov. 15 during Annual Meeting at Southwest Library

Two inspiring figures in the history of our organization will be celebrated at our 30th anniversary Annual Meeting.



Jerry Robinson and Joan Mraz

The event runs from **10:30 a.m. to noon on Saturday, Nov. 15, 2014**, at the Southwest branch of Seattle Public Library, 9010 35th Ave. S.W. Refreshments will be served.

We will honor the memory of art teacher **Joan Bailey Mraz**, our co-founder with **Elliott Couden** in

1984, and of newspaper publisher **Jerry Robinson**, who served as a founding board member.

Also on the agenda will be the election of officers and new board members for 2015, along with changes in the organization's bylaws. Members are encouraged to attend, and the public is welcome.

### Other passages

We sadly note the passing of these members and supporters of our organization: **Glenna Gould**, Nov. 1, 2013, age 94; **Herb Blackinton**, July 4, 2014, age 71; **Betty Broughton**, July 28, 2014, age 85; and **Audry Taylor**, Sept. 6, 2014, age 90.



### A new face: Hannah Reed

Bolstering our cataloguing of photos in our collection is Hannah Reed, a student in the University of Washington Museum Studies certificate program. Her internship is supported by a grant from 4Culture. She earned a bachelor's degree in history (minor in Asian studies) at Seattle University in 2012 and is a 2008 graduate of Juanita High School. She has worked and volunteered at the archive of the Archdiocese of Seattle. "I think old photos are fascinating, and I want to learn more about how to properly catalog them," she says. Please welcome Hannah next time you see her at our museum!



Molly Ringle addresses Greek myths as she presents her young-adult fantasy *Persephone's Orchard* at the Sept. 5, 2014, installment.

## Year two of 'Words'

After full year around the sun, series features genres galore

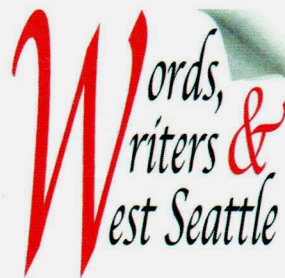
Join us for the popular "Words, Writers & West Seattle" series. It's the **first Friday evening of each month at Barnes & Noble Westwood Village**.

The October 2014 installment opens the second year of this free series. All sessions run **from 5 to 7 p.m.**

Series chair **Dora-Faye Hendricks** books future installments. Contact her at 206-280-9983.

If you buy any book while attending, **10 percent** of proceeds go to our historical society. Coming up:

**Friday, Oct. 3, 2014**, Susan Rich, *Cloud Pharmacy* (White Line Press, 2014, poetry)



Visit [loghousemuseum.info](http://loghousemuseum.info), our website, to see and hear video of previous authors' talks in this series!

**Friday, Nov. 7, 2014**, Sandi Doughton, *Full Rip 9.0* (Sasquatch Books, 2013, science)

**Friday, Dec. 5, 2014**, Karen S. Robbins and Sally Marts, *Shoe Print Art: Step into Drawing* (Hide and Seek Press, 2013, art for children)

**Friday, Jan. 2, 2015**, Christine Brant, *Red and Grey* (Dark Dragon Publishing, 2007, adult fantasy)

**Friday, Feb. 6, 2015**, Theresa McCormick, *A Far Cry from Here: Growing Up and Out of Fundamentalism* (University Book Store Press, 2014, memoir)

### Ye Olde shop is new again at our museum



The focus area of our Log House Museum's "Telling Our Westside Stories" exhibit has been transformed into a miniature version of the waterfront landmark the Ye Olde Curiosity Shop, founded in 1899 by West Seattle's J.E. "Daddy" Standley. The downtown tourist store will be closed from October 2014 through June 2015 for seawall construction. The focus area at our museum is curated by Peg Boettcher, "chief wrangler" of the shop. Come try out the Charlie Chaplin nickelodeon! (We supply the nickels.)

- Our Board of Trustees**
- Marcy Johnsen, president
  - Tia Hallberg, vice-president
  - Ron Arant, treasurer
  - Bonnie Gromlich
  - Dora-Faye Hendricks
  - Kerry Korsgaard
  - Inez Lindsey
  - Dave Montoure
  - Peder Nelson
  - Alan Peterson
  - Nancy Sorensen

- Our Advisory Council**
- Earl Cruzen
  - Merrilee Hagen
  - Jordan Hecker
  - Sharon Huling
  - Scott Hunt
  - Pat Jablonski
  - King County Council member Joe McDermott
  - Jack Miller
  - Patricia Mullen
  - Charles Payton
  - Seattle City Council member Tom Rasmussen
  - Greg Theobald
  - Diane Tice
  - Jerry Vandenberg



The unveiling of the Admiral totem pole on Friday, June 6, 2014, at our Log House Museum was made possible

# By your generosity!

Event draws 1,300, including 900 students from Alki, Schmitz Park and Lafayette elementary schools

Mayor Ed Murray, King County Executive Dow Constantine, Duwamish Tribe among two-dozen official unveilers

To see real-time and time-lapse video of the unveiling, and a list of all the dignitaries, visit [www.loghousemuseum.info](http://www.loghousemuseum.info).



Exactly **1,257** people (in  
including those standing outside of the f  
Photo by Jean Sherrard. Lift truck





### The story:

Our newly restored totem pole is a replica of a pole carved in about 1901 by natives of the coastal island region of British Columbia and brought to Belvedere View Point Park in 1939 by West Seattleite Joseph E. "Daddy" Standley.

Carved in 1966 from a Schmitz Park log by Boeing engineers Michael Morgan and Bob Fleischman, this replica stood at Belvedere View Point Park on Admiral Way from 1966 to 2006.

We thank Artech Fine Art Services, the National Society of the Colonial Dames of America, John Bennett, Seattle City Council member Tom Rasmussen, Seattle Parks and Recreation, Alki Lumber and countless other donors and volunteers for making it possible for us to preserve and raise this West Seattle icon.

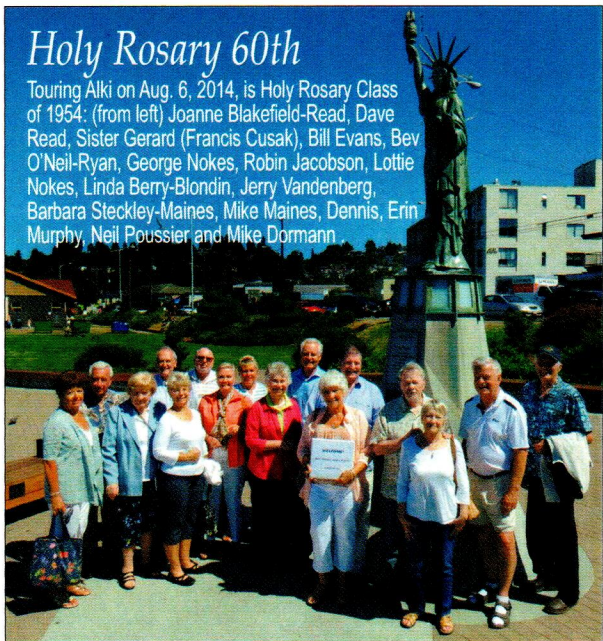
### Thank you!

(including the Alki Spud) appear in this group photo! If anyone is in the photo but not in the frame or obscured by trees, the total attendance is about **1,300**. Photo contributed by Lee Forte of Pacific Rim Equipment Rental.

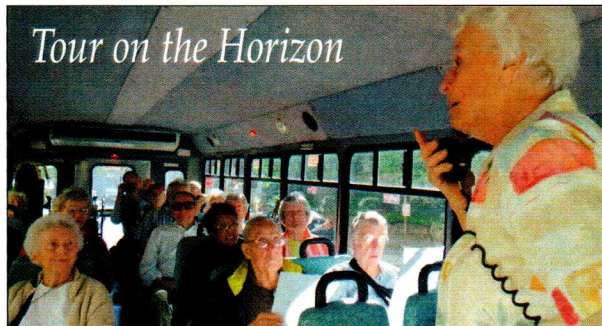


### Holy Rosary 60th

Touring Alki on Aug. 6, 2014, is Holy Rosary Class of 1954: (from left) Joanne Blakefield-Read, Dave Read, Sister Gerard (Francis Cusak), Bill Evans, Bev O'Neil-Ryan, George Nokes, Robin Jacobson, Lottie Nokes, Linda Berry-Blondin, Jerry Vandenberg, Barbara Steckley-Maines, Mike Maines, Dennis, Erin Murphy, Neil Poussier and Mike Dormann



Former West Seattleite and Seattle City Council member Phyllis Lamphere addresses 25 Horizon House residents during a four-hour bus tour of West Seattle and White Center on May 1, 2014, sponsored by our historical society. Several residents of the First Hill retirement home have been interview subjects for programs at the facility this year.



### Tour on the Horizon

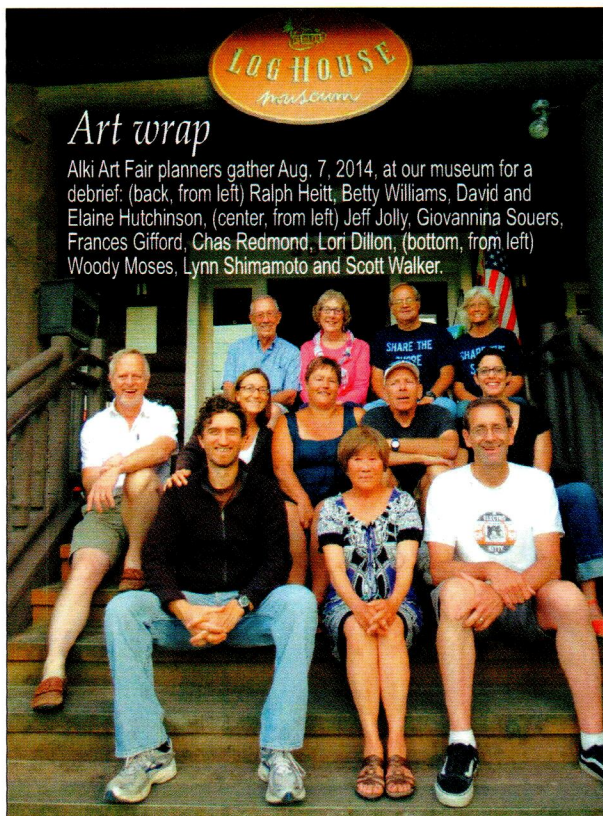


### Doc talk

Seattle filmmakers Yasu and Sandy Osawa speak to a crowd of 100 on Sept. 6, 2014, at High Point Neighborhood House after a screening of their Duwamish Tribe documentary "Princess Angeline" sponsored by West Seattle Meaningful Movies and our organization.

### Grand time at Gatewood

The June 22, 2014, "If These Walls Could Talk" tour of the 1910 Craftsman lodge known as the Gatewood Bed and Breakfast was true to its name. Representatives of all five families who have lived in the massive structure were present to tell the stories. Also, King County archivist Greg Lange (left photo, at right) provided details about the property before the lodge was built. Providing musical entertainment were (right) volunteer pianist Verona Ryan and singer Peggy Clark Wortman of the Clark family that lived there in the 1940s. Nearly 100 attended the annual tour, sponsored by our organization. Many thanks to the Hayes family! (Photos by Brad Chrisman)



### Art wrap

Alki Art Fair planners gather Aug. 7, 2014, at our museum for a debrief: (back, from left) Ralph Heitt, Betty Williams, David and Elaine Hutchinson, (center, from left) Jeff Jolly, Giovannina Souers, Frances Gifford, Chas Redmond, Lori Dillon, (bottom, from left) Woody Moses, Lynn Shimamoto and Scott Walker.



### Down by our Riverside

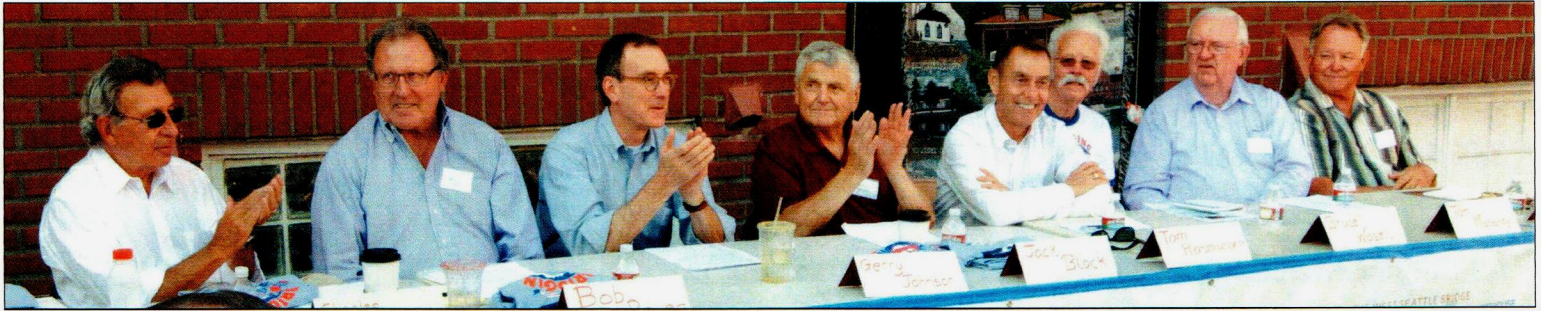
Frank Zuvela (red shirt), who grew up in the Riverside neighborhood of West Seattle, regales a group of 25 on Aug. 16, 2014, during his annual tour of the hillside community beneath and just south of the West Seattle Bridge, sponsored by our historical society.

### A new rail without fail

Eduardo Reyes (left) and David Mazak of Dufour Construction of West Seattle carefully measure the distances between sections of peeled logs as they construct a new pair of front railings for our "Birthplace of Seattle" Log House Museum. The project was funded by 4Culture with a significant in-kind contribution by Dufour Construction.







The 30th anniversary "Bridging the Gap" panel in the Hotwire Online Coffeehouse courtyard (from left): Charles Royer, Bob Royer, Gerry Johnson, Jack Block, Tom Rasmussen, Bruce Wasell, Tom Maynard and Terry Finn. (Photo by Patrick Robinson, West Seattle Herald)

## The building of 'a West Seattle kind of bridge'

**I**t was a story too big for eight panelists to tell in two hours. But we got much of the story's emotion, challenge and humor on the record.

"Bridging the Gap: The Full Story Told by Those Who Were There" made for a rousing evening July 14, 2014, exactly 30 years from when the high-level West Seattle Bridge fully opened. Here are edited excerpts:

**Bob Royer, ex-deputy mayor:** As far back as 1916, West Seattle was clamoring, not for any bridge, but they wanted a high bridge. They didn't want to mess with all of the stuff in the tide flats and all the boats coming in. In 1924, they got a lower-level bascule bridge, and six years later, in 1930, they got another. It became part of the West Seattle culture to be dissatisfied with the bridge.

**Terry Finn, ex-editor, West Seattle Herald:** In West Seattle, there's always been a feeling of separateness and, to some degree, isolation, and I have to confess, a little bit of paranoia, because historically West Seattle has always felt mistreated or not adequately treated by the rest of Seattle.

**Charles Royer, ex-mayor:** When I ran in 1977, I said, "If you build this freeway to West Seattle, we're going to lose those little, affordable houses, it's going to accelerate the gentrification, and the character will go away." I also said we didn't have the money. So I carried West Seattle in the primary, being the only one of 14 candidates to say I couldn't build a bridge.

**Jack Block, ex-Port of Seattle commissioner:** A lot of the steel ships were notorious for hitting the bulkheads. It was very difficult for the tugboats to get between the bridge abutments and the vessel. It was always a gamble trying to get through there. We were all kind of holding our breath, and sure enough, finally the good captain (Rolf Neslund, pilot of the freighter Chavez in June 1978) did us all a favor.

**Royer:** When the ship hit the span, I got to issue my first military order when the police dispatcher asked me what to do. I said, "Seize the ship!" So we did. We took the ship into custody and put a \$5 million bond on it. That was a really wild night. I had not planned

to be Charley Royer the bridge-builder at that early point in my mayoralty. At some point, we would build it, but I didn't plan for it to start that soon.

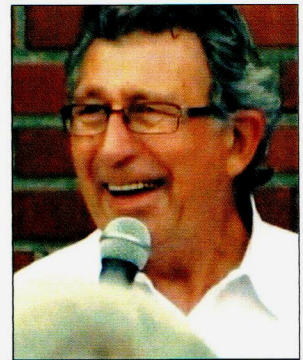
**Gerry Johnson, ex-aide to Sen. Warren Magnuson:** The senator and I both were to fly back to Washington D.C. the morning after the ship hit the span, but the travel was not something at his age that he relished. It always put him in a very bad mood. I arrived and heard him in the living room singing to himself, and he had the newspaper spread out. He stopped singing, cleared his throat, coughed and said, "You know what this means? We can fix this now. It's an obstruction to navigation." And off we went.

**Tom Mahoney, ex-project engineer:** One week after the ship hit the span, my life changed from having eight or 10 people working for me to 120 employees in 13 different companies in 10 different offices focused on your bridge. We hit the ground running.

**Tom Rasmussen, ex-staff to Jeanette Williams, City Council member:** Jeanette had no doubt it was going to be a high-level bridge. No rebuild, no mid-level bridge or anything like that. She said, basically, "This is our chance to get it. A lot of people have tried, and they've failed," and she went to work calling in all of her political chits.

**Bruce Wasell, ex-project engineer:** That became the thing that really was close to her heart. She saw that the water going under the bridge was clogged with various types of boats, and she wanted to make sure there was good mobility.

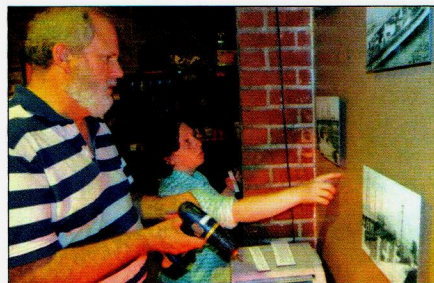
**Royer:** I wanted a really beautiful bridge, the Golden Gate of the Northwest, way beyond our reach. But what we got is a good bridge, a workman-like bridge. Maybe it's a West Seattle kind of bridge.



*'If you build this freeway to West Seattle, we're going to lose those little, affordable houses.'*

**Charles Royer**

Visit [loghousemuseum.info](http://loghousemuseum.info), our website, to see and hear full-length video of the July 14, 2014, bridge panel.



(Left photo) Volunteer Bob Carney and Sarah Baylinson, museum manager, install our "Bridging the Gap" photo exhibit at Hotwire Online Coffeehouse. The 19-photo exhibit ran from mid-June through early August 2014, in honor of the 30th anniversary of the West Seattle Bridge. (Right photo) Adele Arutunian (left) and Sofie Phillips, eighth graders at Madison Middle School, model our "Bridging the Gap" T-shirts while volunteering at the June 21, 2014, MoCA (Morgan Community Association) festival. Only a few of the shirts, in sizes L and XL, remain for sale in our museum gift shop.



# FOOTPRINTS

Newsletter of the Southwest Seattle Historical Society  
 c/o "Birthplace of Seattle" Log House Museum  
 3003 61st Ave. SW, Seattle, WA 98116-2810

NONPROFIT  
 ORGANIZATION  
 U.S. POSTAGE PAID  
 SEATTLE, WA  
 PERMIT NO. 4960

ADDRESS SERVICE REQUESTED

**Do we have your e-mail address?** Let us know so that you can stay up-to-date! Please e-mail [bgreen496@yahoo.com](mailto:bgreen496@yahoo.com) to get on the list.



**Give the gift of a membership!** It's easy. Visit us at [loghousemuseum.info](http://loghousemuseum.info), click "Membership," print the form, fill it out and mail it in with a check or credit-card number. Or sign up in person at an event or at our "Birthplace of Seattle" Log House Museum.

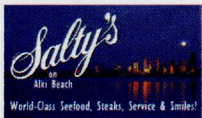


## What's coming this fall and beyond

- Friday, Oct. 3, 2014** ..... 5-7 p.m. .... **"Words, Writers & West Seattle,"** featuring Susan Rich, Barnes & Noble Westwood Village, 2600 S.W. Barton St.
- Friday, Nov. 7, 2014** ..... 5-7 p.m. .... **"Words, Writers & West Seattle,"** featuring Sandi Doughton, Barnes & Noble Westwood Village, 2600 S.W. Barton St.
- Saturday, Nov. 8, 2014** ..... 11 a.m.-2:30 p.m. .... **Champagne Gala Brunch,** Salty's on Alki, 1936 Harbor Ave. S.W.
- Saturday, Nov. 15, 2014** ..... 10:30 a.m.-noon ..... **Annual Meeting,** Southwest Library, 9010 35th Ave. S.W.
- Friday, Dec. 5, 2014** ..... 5-7 p.m. .... **"Words, Writers & West Seattle,"** featuring Karen S. Robbins and Sally Marts, Barnes & Noble Westwood Village, 2600 S.W. Barton St.
- Friday, Jan. 2, 2015** ..... 5-7 p.m. .... **"Words, Writers & West Seattle,"** featuring Christine Brant, Barnes & Noble Westwood Village, 2600 S.W. Barton St.
- Friday, Feb. 6, 2015** ..... 5-7 p.m. .... **"Words, Writers & West Seattle,"** Barnes & Noble Westwood Village, featuring Theresa McCormick, 2600 S.W. Barton St.

**Southwest Seattle Historical Society board meetings are held at 7 p.m. the third Tuesday of the month in the South Seattle Community College President's Board Room. You are welcome to attend!**

## Big thanks to our 2014 sponsors and supporters for the Champagne Gala Brunch:



**Dufour Construction of West Seattle**