

Footprints

on the sands of time...

ISSUE LXXXII

SOUTHWEST SEATTLE HISTORICAL SOCIETY

WINTER 2013

Alki Elementary School to celebrate its centennial Thursday, March 28

Historical displays, sharing activities, group photo on tap

Calling everyone who has ever attended Alki Elementary School: Mark your calendars to come celebrate the school's 100th birthday on **Thursday evening, March 28.**

The Alki PTA and the Southwest Seattle Historical Society, co-sponsors of the celebration, are planning a slate of activities to engage students and community members of all ages.

"This will be an exciting event, with activities for the youngest of today's Alki students, for those who attended Alki many decades ago and for everyone in between," says **Amy Bannister**, who chairs the event for Alki PTA.

The party kicks off with a group photo to be taken at **5 p.m.** outside the school. The photo will be made available widely online in the days following the event.

"It may take a few minutes to arrange everyone for the photo," says **Alan Peterson**, board member for the Southwest Seattle Historical Society, "so we urge anyone who wants to be a part of this landmark image to arrive at 5 p.m. sharp."

Once the photo is taken (as well as separate photos by decade), the celebration moves indoors and starts at **6 p.m.** It will include a program with several speakers, a wide-ranging audio-



Alki Elementary School fifth-graders line up for a group photo on May 21, 1928.

Southwest Seattle Historical Society collection

visual show of images of the school's history, activities for children and an area in which attendees can display (and donate) school-related artifacts and have their Alki-related stories captured on video.

Of course, the event will feature party-style refreshments, including a sheet cake or two denoting the centennial.

Everyone attending the event will receive a memento of the occasion.

For more info, search Facebook for Alki Elementary School Centennial Celebration, <https://www.facebook.com/events/433401556733918/>, and visit our historical society website, <http://www.loghousemuseum.info>.

What's inside

Meet our new executive director
Page 2

Volunteer info sessions start every month
Page 3

What a year for our organization!
Page 4

Time to pre-order 'Apron Strings' cookbook
Page 4

Tidbits on how we raise revenue
Page 5

Welcome to our new members!
Page 5

Meet your Board of Trustees
Page 6

Madison students 'work' at 'Telling Our Westside Stories'
Page 7

Check out a full calendar for winter/spring!
Page 8

FOOTPRINTS

is the official publication of the Southwest Seattle Historical Society.

Editor

Joey Richesson

Printing thanks to

**Where to find us**

The Southwest Seattle Historical Society's home is the "Birthplace of Seattle" Log House Museum.

Address

3003 61st Ave. SW
Seattle, WA
98116-2810
(one block south of Alki Beach)

Hours

noon-4 p.m.
Thursday-Sunday

Phone

206-938-5293

Clay Eals' cell:
206-484-8008

E-mail

Clay Eals,
executive director:
clay.eals@loghouse
museum.info

Sarah Baylinson,
museum.manager:
sarah.baylinson
@loghouse
museum.info

Website

www.loghouse
museum.info

'Like' us on
Facebook

Log House Museum

Longtime historian, journalist and advocate begins work as our first executive director

The Southwest Seattle Historical Society board has hired veteran heritage advocate **Clay Eals** as the organization's first executive director.

Eals, an Admiral resident, is known locally as editor of the "West Side Story" history book about the Duwamish peninsula and a leader of the campaign to secure city landmark status for the Admiral Theater. He began work in the new half-time position on Jan. 1, 2013.

Overseeing our programs and projects, including our Log House Museum, Eals will focus on volunteer recruitment, fundraising and outreach and supervise our part-time museum manager.

"We are so excited to announce this major step, which we trust will bring us to new levels of prominence and sustainability," says **Marcy Johnsen**, president of the society's board.

"Clay is a well-known author, community activist and passionate advocate for history and preservation," Johnsen says. "He has volunteered hundreds, if not thousands, of hours for our historical society, and his track record, which includes recent work in communication and fundraising, has prepared him to lead us to greater visibility and community engagement."

Eals has worked since 2008 as communication officer for Encompass, a family-services nonprofit based in North Bend. He relishes the new opportunity.

"This position taps into my heart for history," Eals says. "It's a great chance

to help people get fired up by the stories of our area – kids and adults alike.

"I often say that if you love where you live, the historical society is the group for you because that's how you can discover how it got to be so loveable. I look

forward to working with everyone – board members, volunteers and the community at large – to bring out and share memories and connections that inspire us all."

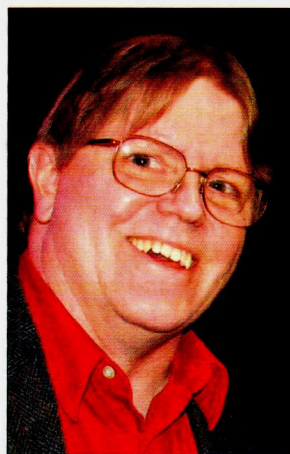
Eals is a native Seattleite whose mother was born and raised in West Seattle. For 15 years, he worked for four Northwest newspapers, including the West Seattle Herald/White Center News, which he edited from 1983 to 1988. In 1984, the Southwest

Seattle Historical Society began, and Eals became a founding member.

He edited and led production of "West Side Story," the 288-page history book published in 1987 by Robinson Newspapers, joined our board and in 1989 began three years as president, helping lead our successful Admiral Theater landmark campaign.

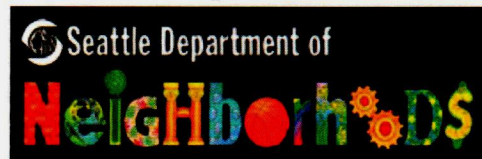
He also led "Homes with History" tours, helped secure Alki voter approval for our purchase of the Log House Museum, emceed dozens of society events and fostered our strong link with South Seattle Community College.

Recently, he has represented us in a coalition of four heritage organizations in seeking to ensure preservation and restoration of the fire-damaged, city-landmark Fir Lodge/Alki Homestead.



Clay Eals

WE DEEPLY
APPRECIATE THE
FINANCIAL
SUPPORT OF:



Join our burgeoning group of volunteers — and don't miss our education trunk and teachers library

It has been an exciting time at our Log House Museum these past four months. I am grateful to have been hired to replace **Sarah Frederick** as museum manager, working alongside our first-ever executive director, **Clay Eals**. The museum continues to charge ahead with new and exciting changes that carry us toward the center of the community.

To start the New Year right, we held a volunteer information session on Jan. 5. I am delighted to report that nine enthusiastic people attended.

If you are interested in volunteering for the society in any capacity, it's never too late! **Carol Vincent**, membership secretary, will hold a training **from 11 a.m. to 1 p.m. every first Saturday of the month**. It's a great way to get involved with our community and can lead to opportunities in education, collection handling and programming.

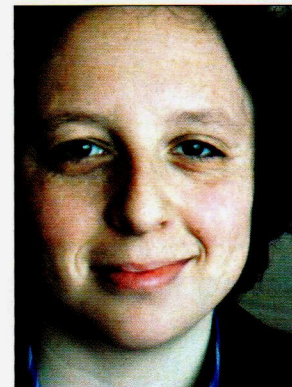
As winter continues to force us into hibernation and the roads get icier, we

see fewer school tours. It can be pretty quiet around the museum in the winter without groups of kids buzzing around and asking hundreds questions.

One of our many goals is to make our Log House Museum just as useful and accessible in the winter. For this reason, we have created a traveling education trunk that can be rented out. The trunk comes complete with props, books and teaching lessons. It makes a perfect addition to lessons on Seattle history, encouraging an interactive learning style.

In addition, we have an extensive teachers library. Books can be checked out for two weeks at a time and cover subjects relating to the pioneers and Native Americans.

As we become a stronger fixture in our community, we encourage you to let us know what you want to see at the Log House Museum. And to volunteer, please give me a call or send me a message.



*Sarah Baylinson
museum manager*

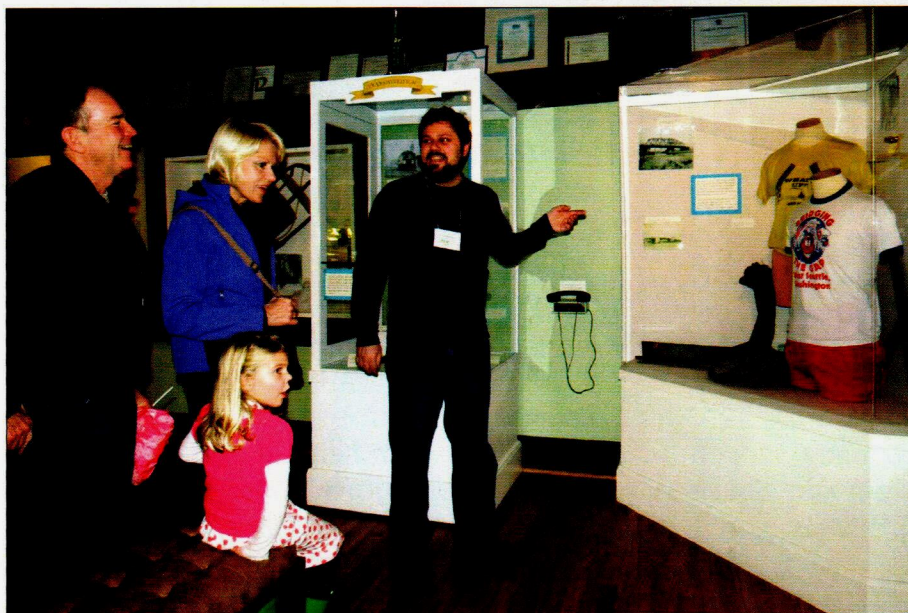
*Call me at
206-938-5293,
or e-mail me at
sarah.baylinson
@loghouse
museum.info*

Come to a Saturday volunteer information session!

Volunteers are our lifeblood, and we have many volunteer opportunities. Serving as a museum docent is a visible role. But we also seek folks to assist with database upkeep, events, publications, documents, grant writing, membership, transcribing, computers and audio-visual needs.

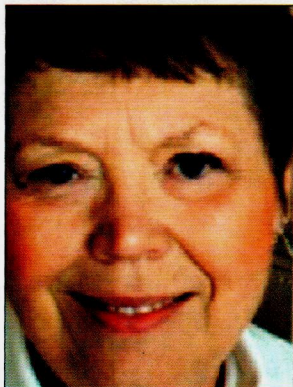
New volunteers are **Ann Anderson, Shannon Crowley, Nancy Elliott, Jeni Gauthier, Amanda Gilbert, Suzanne Hartley, Pete Heintz, Kathi Ishimaru, Mark Jaroslaw, Andrew and Bonnie Jones, Patsy LaFayette, Mark Lewis, Jude McNeil, Colleen Schau, Chris Simmons, Nancy Sundberg** and **Lisa Toomey**.

Info sessions for new volunteers take place the first Saturday of each month. The next one is **March 2** at the museum. Call us at 206-938-5293 or just stop in!



Volunteer Pete Heintz shows the "Telling Our Westside Stories" exhibit to (from left) Larry and Joanne Rehkopf of Normandy Park and their granddaughter, Sonja Rehkopf of West Seattle.

We need you to help us make the transition and grow!



*Marcy Johnsen
president*

*Sally Jewell,
new Interior
nominee, is
circle donor
to museum*

West Seattle resident Sally Jewell, who was nominated by President Obama on Feb. 6, 2013, to be Secretary of the Interior, is with husband Warren a 1997 circle donor to our Log House Museum.

Honored by the association, we wish Sally and her family every success!

What a year the Southwest Seattle Historical Society had in 2012! Along with successful events, including the dedication of the Riverside Monument, the July 4th annual member picnic, August Ice Cream Social, we had our most successful Gala fundraiser in October!

We also had walking tours hosted by **Peder Nelson, Frank Zuvella and Judy Bentley**, a fall bike tour and multiple school tours. We mounted the first installment, "The Land" of our exhibit, "Telling Our Westside Stories."

If you haven't visited our Log House Museum in a while, you are in for a surprise. The exhibit gallery has moved into the high-tech world with oral histories you can listen to while viewing a multitude of artifacts and photos. It's a must-see and -hear for all ages!

We are making other big changes. We started last January with a bold decision made at our annual board retreat. Having finished the self-study Museum Assessment Project, we prioritized recommendations and concluded that for our organization to move forward and grow, it was time for us to hire an executive director (see page 2).

Our membership, programs, and sustainability need an infusion of new people and ideas, as well as the cultivation of our current members, and the honoring of those who have passed on. The top priorities of the new executive director are directly in line with these needs: increased visibility of our organization and programs, outreach to the community, and sustainability.

I am excited about the prospects of what this organization can be, and I am counting on you — our members and supporters — to help us make the transition and grow. We need new members, new volunteers, renewed memberships and reconnections with community. We need you! I invite you to renew your membership and commitment to preserving history today.

Marcy Johnsen, president



*Pre-order now for new
'Apron Strings' cookbook
as work nears completion*

The work of putting together "Apron Strings: Recipes and Recollections from West Seattle and the Duwamish Peninsula" is almost finished. The text and pictures will go to Third Place Press by the end of this month.

We have been so pleased and honored that you, our membership and friends, have shared old family recipes that capture the traditions and diversity of West Seattle families.

Measurements and oven temperatures are essential, but the stories and photos that go with the recipes — the anecdotes, descriptions, memories that always come with a favorite dish — describe the ways of living and cooking from our past.

You may pre-order a copy by send a check for \$19.95 to: Southwest Seattle Historical Society, c/o Log House Museum, 3003 61st Ave SW, Seattle WA 98116-2810.

Check out our Facebook page: Log House Museum Cookbook.

**Joan Stover
project coordinator**

Glimpses into the fiscal side of our society

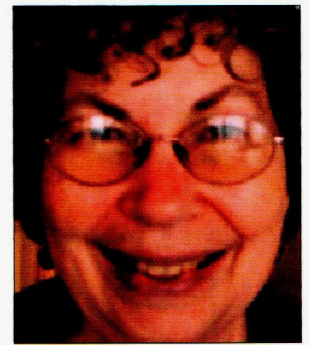
Here are a few tidbits about fundraising for our Southwest Seattle Historical Society!

The fall 2012 gala was not only fun, but it also yielded \$16,000.

Two members also recently made very generous donations. One was from **Gail Anderson** for \$400 and the other was from **Tom Rasmussen** for \$5,000.

The bake and book sale on the porch of the museum resulted in \$487 being deposited. Books were donated by **Don Kelstrom**, and baked goods were donated by **Inez Lindstrom, Carol Vincent**, and myself.

All funds will be used to support our historical society and its programs. Thank you for all your support.



Joan Stover
treasurer

Do we have your e-mail address?
We would like to, so that you can stay up-to-date on the latest blog posts on our web-site. Please e-mail us at clay.eals@loghousemuseum.info to get on the mailing list!



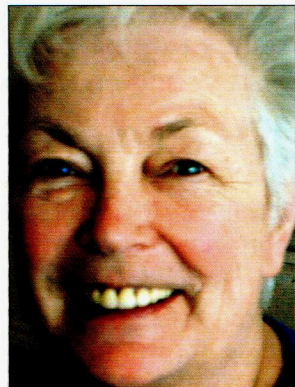
<— Fun on the 'phones

Sonja Rehkopf of West Seattle smiles at hearing a reminiscence related by Natalie Earnest as part of the "Telling Our Westside Stories" exhibit at our Log House Museum.



Welcome new members!

Welcome to new members: **Jeni Gauthier, Amanda Gilbert, Bonnie and Andrew Jones, Margo Macvicar-Whelan and Chas Redmond.**



Carol Vincent
membership secretary

Joining is easy. Clip the form at right. Members receive Footprints and a 10-percent gift-shop discount.

IN MEMORIAM:
We lost these members recently and thank them for their service:
Marjorie Dau, Pearl Ebert, Mary Lou Richardson.

Apply for membership now!

Mail in this form today. Membership makes a great gift!
Yes, I want to support the work of the Log House Museum!

- \$15 Senior/Student \$25 Individual/nonprofit
- \$40 Family \$100 Pioneer
- \$150 Business \$250 Settler

Please send me information about volunteer opportunities.

Name _____

Address _____

City, State, Zip: _____

Cash _____ Check _____

Visa/MasterCard _____ Exp.: _____

Name as it appears on card: _____

Please make checks payable to the Southwest Seattle Historical Society (SWSHS). The Log House Museum is a project of the SWSHS, a non-profit 501(c) (3) organization, Tax ID #91-1297010. All gifts are tax-deductible as allowed by law.

Meet your 2013 Board of Trustees

We are pleased to present our newly elected 2013 Board of Trustees. These folks bring a wealth of experience, skills, knowledge and abilities. While their backgrounds are diverse, they all share the love of the Southwest Seattle Historical Society. Join us!

**Southwest
Seattle
Historical
Society
Advisory
Council**

**Earl
Cruzen**

**Merrilee
Hagen**

**Jordan
Hecker**

**Sharon
Huling**

**Scott
Hunt**

**Barton
Kale**

**King County
Council
member
Joe
McDermott**

**Jack
Miller**

**Patricia
Mullen**

**Charles
Payton**

**Seattle
City Council
member
Tom
Rasmussen**

**Greg
Theobald**

**Diane
Tice**

**Jerry
Vandenberg**

MARCY JOHNSEN, president

Returning as board president, Marcy is a retired registered nurse who now works part time for Service Employees International Union as an organizer. Her best claim to fame: she spent 12 years growing up in the building that became Log House Museum.



Vacant, Vice President

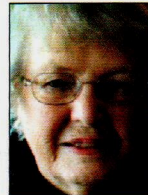
CAROL VINCENT, membership secretary

A longtime board member and former president, Carol has served in nearly every role with our society and provides endless expertise and skill to the society.



AUDRY TAYLOR, secretary

Audry is our new secretary. From her West Seattle office work for Westside Federal Savings & Loan and as a legal secretary for attorney Mel Swanson, she brings insight to this role.



JOAN STOVER, treasurer

Joan is returning as our valuable and skilled treasurer. She is happily retired and enjoying opportunities to volunteer at our Log House Museum, learning new things through the Osher Life Long Learning Program at the University of Washington and developing her knitting skills.



TIA HALLBERG, board member

Tia works for as a registered nurse for the city Department of Aging and Disabilities. She is former board secretary.



FLORA BELLE KEY, board member

Flora Belle is Beach Drive native and longtime West Seattle resident. She has worked as an executive secretary and flight attendant. Now retired, she enjoys tennis, political activism and dancing.



KERRY KONGSGAARD, board member

Kerry continues her service on the board. She is a carpenter who works entertainment venues, and her expertise is reflected in the "Telling Our Westside Stories" exhibit.



INEZ LINDSEY, board member

We are pleased to have Inez serving on the board for the first time. She has been a valued volunteer. She is a brown belt in karate and works at the Puget Sound Blood Center.



ALAN PETERSON, board member

Alan is beginning a second term as a board member. An expert in historic postcards and longtime member of our Collection Committee, he brings extensive knowledge of history and education.



JOEY RICHESSON, board member

Joey returns to the board as a trustee. Retired, she brings a career of secretarial and administrative experience and a love of books, writing and West Seattle.



Madison Middle School students delve into 'The Work' of 'Telling Our Westside Stories'

By Judy Bentley

No sooner had the first installment of the "Telling Our Westside Stories" exhibit gone up at our Log House Museum last fall than interviewing started for the second!

The first installment, "**The Land**," features the impact of the environment on life in southwest Seattle — rain, wind, seals and creeks.

Last fall, some 50 students at **Madison Middle School** completed 23 interviews of community residents on the second theme, "**The Work**."

Research began in the social studies / language arts classrooms of teacher **Amy O'Donoghue**. With a help from me, students brainstormed the questions they wanted to ask people about work:

- "What was your first job?"
- "What was your least favorite job?"
- "What did you want to be when you were growing up?"

They asked about hours, pay, training, favorite jobs and memorable work experiences. The goal was to discover what kind of work people who live in southwest Seattle did -- and still do.

The students nominated their neighbors and relatives for interviews, and historical-society members added more nominations. The narrators, as they are called, included **a teacher, a librarian, a painter, an architect, an owner and manager of railroad short-lines, a bank clerk, a waitress, a Boeing employee, an industrial hygienist, a playground supervisor, a writer, a commercial fisher, a marine firefighter, a restaurant manager, a shipyard clerk, a retail salesperson and a clown**. In their youth, they babysat, delivered newspapers and painted numbers on curbs.

Madeline Williams, the oldest person interviewed, was 98 and had memories



Two-dozen Madison Middle School students who worked on "Telling Our Westside Stories" pose for a group photo.

of White Center dating to her parents' arrival in 1914. **Byron Cole**, who worked many years for Seaboard Lumber, was a sawmill consultant and now runs short-line railroads, was the third generation in his family to graduate from West Seattle High School.

Students came to the interviews prepared with questions and background information on the people they would interview. They introduced themselves formally on tape, fixing the date and place for the historical record. They improvised follow-up questions as the interviews unfolded.

Students also had to keep an eye on the little red light on the recorder to be sure it was actually recording. Board member and collections volunteer Alan Peterson helped me supervise.

From these interviews, our and volunteers will transcribe the interviews, make audio selections, edit and design the second installment.

And right around the corner this fall will be interviews for the third installment, "**The Home**." Other themes have been suggested, such as "War" and "Play." It's no exaggeration to say that "Telling Our Westside Stories" could go on forever!

[Judy Bentley is our "Telling Our Westside Stories" coordinator, an author and community historian and a past president of our society.]



Judy Bentley

The first installment of "Telling Our Westside Stories" was partially funded by a Seattle City of Seattle Department of Neighborhoods grant

Interviews took place at Delridge and South Park community centers and at the Southwest Library.

If you would like to volunteer to transcribe interviews (only a short orientation is needed), contact Judy Bentley or Sarah Baylinson at the Log House Museum, 206-938-5293 or sarah.baylinson@loghousemuseum.info.

You may view part of the exhibit on our website: www.loghousemuseum.info.

FOOTPRINTS

Newsletter of the Southwest Seattle Historical Society
c/o "Birthplace of Seattle" Log House Museum
3003 61st Ave. SW, Seattle, WA 98116

ADDRESS SERVICE REQUESTED

NONPROFIT
ORGANIZATION
U.S. POSTAGE PAID
SEATTLE, WA
PERMIT NO. 4960



What's coming in 2013!

- Saturday, March 2 11 a.m. **Volunteer Information Session**, Log House Museum,
3003 61st Ave. S.W., Seattle
- Thursday, March 28 5 p.m. **Alki Elementary School Centennial Celebration**,
3010 59th Ave. S.W., Seattle
- Saturday, April 6 11 a.m. **Volunteer Information Session**, Log House Museum,
3003 61st Ave. S.W., Seattle
- Saturday, May 4 11 a.m. **Volunteer Information Session**, Log House Museum,
3003 61st Ave. S.W., Seattle
- June 2013 **Alki Lighthouse** centennial celebration (details to come!)
- Thursday, July 4 noon **Annual Membership Picnic**, Log House Museum,
3003 61st Ave. S.W., Seattle
- Saturday, Nov. 9 11 a.m. **Annual Founders Gala Brunch**, Salty's on Alki,
1936 Harbor Ave. S.W., Seattle

For more details as events are added, see our website at www.loghousemuseum.info!
Also, be sure to "like" us on Facebook at "Log House Museum."

**Southwest Seattle Historical Society board meetings are held at 7 p.m. the third Tuesday of the month
in the South Seattle Community College President's Board Room. You are welcome to attend!**