

Footprints

on the sands of time....

ISSUE XIV

SOUTHWEST SEATTLE HISTORICAL SOCIETY

APRIL 1991

THIRD ANNUAL TOUR OF HOMES TO SHOW OFF SIX NEW SITES

Put on your walking shoes and peel open your eye for historic detail.

Our society's Third Annual Tour of Homes is just around the corner.

It'll be held -- as has become traditional -- on the day before Mother's Day. This year, that date is Saturday, May 11.

Tour hours will be the same as in previous years, 10 a.m. to 4 p.m., with a kick-off ceremony at 9 a.m.

The price for the tour remains the same, too. Tickets, at \$5 a person for everyone but babes-in-arms, will be available at area banks and at sites on the day of the tour.

Perhaps the best news is that this year's tour will feature six new sites, four of which are owner-occupied homes. And our kick-off site, Hiawatha Community Center, features a bonus -- a free brochure on the dozens of varieties of trees at Hiawatha Park, put together by the arborist who will speak at the kick-off ceremony, **Arthur Lee Jacobsen**.

For details on the tour sites, see the separate list on page 2 of this newsletter.

As was the case last year, the West Seattle Herald and White Center News will print a special tabloid section on Wednesday, May 8, that will serve as the complete, official guide to the tour.

We still need volunteers to help on the tour. In particular, we need a rough total of



Tour-goers enjoy one of last year's sites, as a volunteer takes tickets.

70 people to serve as hosts and hostesses for three-hour shifts on the day of the tour. If you are interested, please call 935-7515, as soon as possible.

The last remaining planning meetings for the tour will be held on Sunday, April 21, and Sunday, May 5, from 1 to 3 p.m. at the West Seattle Library. Please join us in planning the tour and on the tour itself.

One last word: Every member of this society is hereby appointed the task of insuring a day of gorgeous spring weather, as we've had for the previous two tours.

SSCC PUTS SOCIETY IN EXPANSION PLAN

South Seattle Community College has been our home since **Elliott Couden** founded the society in 1984.

The college has provided us a formal mailing address, free meeting space and artifact storage for several years.

That relationship is now a long way toward becoming official.

SSCC President **Jerry Brockey** indicated recently that when an expansion of the college's Learning Resource Center (library) takes place in the next few years, we will be part of the plan.

Anticipated is accessible museum space for display and storage of artifacts, all designed to meet current standards of long-term artifact preservation.

Couden, the first president of our society, sits on the college's long-range planning committee and will keep the

society posted from time to time on the progress of the expansion.

A key element in our relationship with the college will be **Liz Hildebrant**, new director of the Learning Resource Center.

On Jan. 24, after receiving a memo from Brockey specifying his desire that our society become one of her top concerns, Hildebrant gave a tour of the library to a committee of our board: Couden, **Clay Eals**, **Van Peirson** and **Carol Vincent**.

Hildebrant indicated that we can have ready access to much of the library's wall display space. She also promised to enlarge and upgrade the storage space for our artifacts over the next few months.

The committee members who met with Hildebrant found her knowledgeable and delightful. We are fortunate to have her help and enthusiasm in meeting our long-term needs -- as well as her membership!

We are equally fortunate to be associated with SSCC, which enjoys a national reputation for excellence.



Host **Moe Beerman** shows now-and-then photos of 1503 42nd Ave. S.W. to a tour-goer last May.

THE SLATE OF SITES

Here's a list of the 10 sites for this year's Tour of Homes on Saturday, May 11 (see story, page 1). Sites new to the tour are in bold face.

1. **Hiawatha Community Center, 2700 California Ave. S.W.** (Kick-off at 9 a.m.)
2. **5114 S.W. Grayson St.**
3. **1503 42nd Ave. S.W.** (on the 1990 tour)
4. **Alki Lighthouse, 3201 Alki Ave. S.W.**
5. **Hainsworth House** bed-and-breakfast (on the 1989 and 1990 tours), 2657 37th Ave. S.W. (open at 11 a.m.)
6. **1723 41st Ave. S.W.**
7. **Walker Rock Garden, 5407 37th Ave. S.W.**
8. **Villa Heidelberg** bed-and-breakfast (on the 1989 tour), 4845 45th Ave. S.W.
9. **4511 S.W. Webster St.**
10. **4605 S.W. Monroe St.**

Look for details in the West Seattle Herald and White Center News May 8.

SOCIETY MEMBER FLO LENTZ WRITES HISTORY OF KENT

Flo Lentz, a West Seattle resident and respected architectural historian, has a new feather in her cap.

Lentz is the author of Kent: Valley of Opportunity, a 128-page hardcover history book on the city of Kent.

Published last November by Windsor Publications, Inc., of Chatsworth, Calif., the book was sponsored by the Kent Chamber of Commerce.

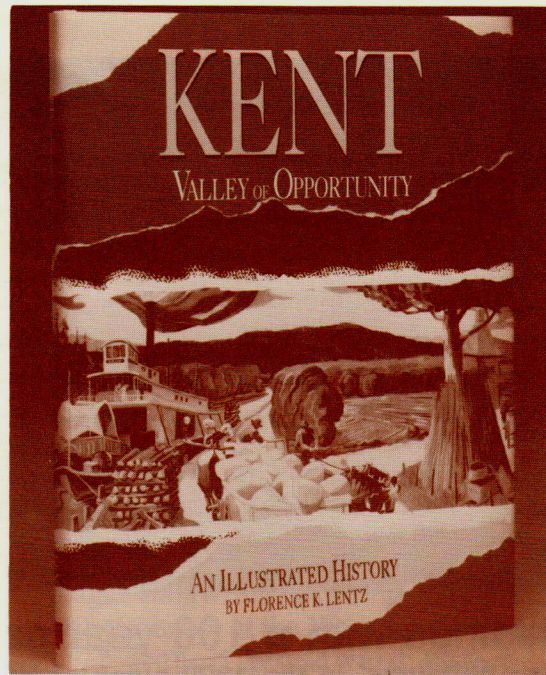
The 8-1/2-by-11-inch volume, illustrated with more than 100 color and black-and-white photos, covers the Kent area's geologic development, the customs and myths of the region's native peoples, the arrival and settlement of Europeans and Yankees on the White River, and the founding, growth and modern development of the city of Kent.

Footing the bill for the book were 26 local organizations and businesses, which purchased the last 31 pages of the book to tell their own histories.

Lentz, responsible for the book's text, is involved in several historical writing and preservation projects.

She wrote the 52-article Centennial Snapshots series for the Seattle Times in 1988-89. She served for several years on the King County Landmarks Commission and as architectural historian for the state of Washington.

Lentz was an active member of our



Flo Lentz' history of Kent was published last November.

society's Executive Board in 1989 and 1990, chairing our society's first Tour of Homes in 1989 and writing the detailed nomination document that our society submitted to the city of Seattle in seeking an historic landmark designation for the Admiral Theater.

Research assistant for the Kent book was **Deb Barker**, a member of our society's Executive Board.

The Kent book was published in limited edition. It's available at Kent-area bookstores and through the Chamber of Commerce. It sells for \$24.95.

HOPES FOR THEATER ARE STILL AFLOAT

A developer who intends to preserve the Admiral Theater as a moviehouse apparently is negotiating a purchase with Cineplex Odeon.

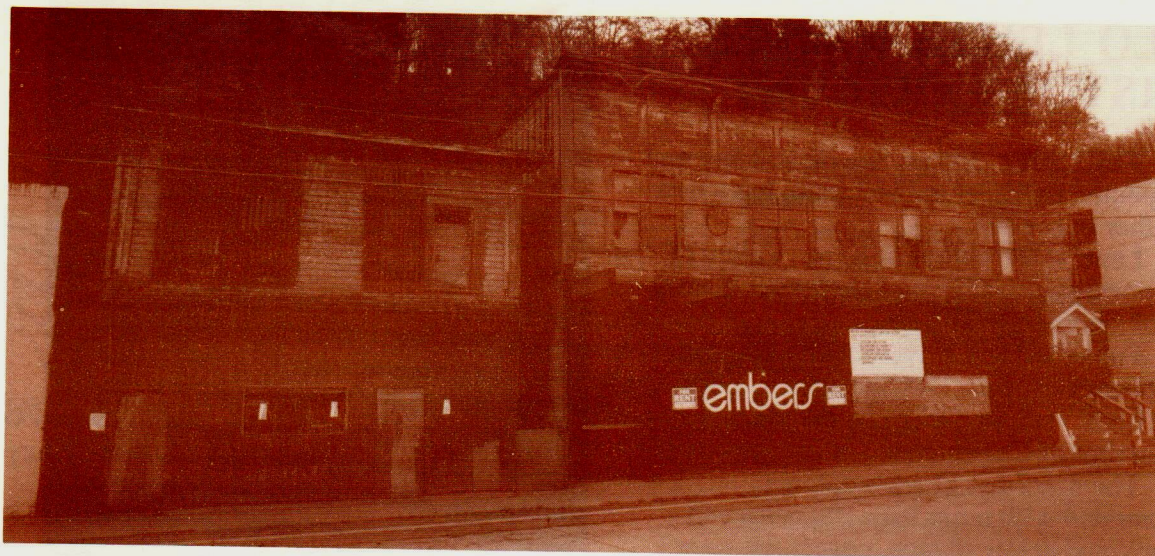
The developer does not wish to be identified yet, Cineplex attorney Howard Stambor said in late March.

Westlake Capital Corp., of Seattle, announced last November it was negotiating with Cineplex. Westlake

officials even spoke and answered questions at a community meeting, attended by 135 West Seattleites. The officials were well received by the audience.

In February, however, Westlake announced it had given up on negotiations with Cineplex.

Since then, another Seattle developer has entered the picture as a potential buyer and wants to reopen the Admiral as a theater restorer, Stambor said.



Buildings with a 100-year past

These buildings, in the 1300 block of Harbor Avenue Southwest, have been around for more than a century. Mike Gendville of Bellevue shot this photo and sent it to us to see if there is interest in preserving them. Most recently, the one at right housed the Embers Tavern, which closed in 1983. If you have information or advice, call Gendville at 881-5173 or Deb Barker at 935-3592.

FOUR MEMBERS JOIN EXECUTIVE BOARD

Sometimes you can't tell the players without a scorecard. Well, here's the scorecard:

Our society's Executive Board welcomed four new faces as 1991 began.

Elected to the board by those attending the annual membership meeting on Nov. 10 at South Seattle Community College were:

- * **Berlena Brock** (filling out the two-year remaining term of **Carol Vincent**, who became vice-president).

- * **Elaine Hilden** (filling out a one-year remaining term of **Aurlo Bonney**, who resigned).

- * **Van Peirson** (filling a new, three-year term, replacing **Brad Chrisman**, who declined to seek a second term).

- * **Bob Sumbardo** (filling out a one-year remaining term of **Flo Lentz**, who resigned).

After two years on the board, **Deb Barker** was elected to a new, three-year term. The 10th board member, whose term expires in 1992, is **JoAn Schmitz Fulton**.

Elected to the vice-presidency for 1991 was **Vincent**, moving over from a board position. Re-elected for 1991 were **Clay Eals**, president; **Elliott Couden**, secretary; and **Joan Mraz**, treasurer.

In mid-March, **Hilden** resigned from the board, owing to a regional commitment to the Soroptimists service organization. Later in the month, the remaining nine board members appointed **Mollie Tremaine** to fill **Hilden's** one-year term.

One day before the Nov. 10 annual meeting, newspaper columnist **Emmett Watson** reported he was ill and unable to reminisce as our main program speaker, as planned.

Filling out the program nicely, however, were 80-year-old singer-songwriter **Earl Robinson**, of West Seattle, who presented a lively mini-concert with just one day's notice, and society member **Bette Jean Bullert**, a TV producer who showed a clip from her in-progress PBS documentary on **Robinson**.

SSCC staff accommodated the program change efficiently, moving a piano to the Little Theatre despite a rainfall on the afternoon before.

HISTORY COMES TO LIFE AT LIBRARIES' 100TH-BIRTHDAY PARTY ON APRIL 20

Here's a fun way for your whole family to whet an appetite for local history -- the Seattle Public Library system's 100th anniversary celebration.

The occasion will be celebrated locally on Saturday, April 20. A flurry of events will go on all day at all three Seattle branch libraries in West Seattle:

- * West Seattle branch, 2306 42nd Ave. S.W. (Phone: 684-7444)
- * High Point branch, 6338 32nd Ave. S.W. (Phone: 684-7454)
- * Southwest branch, 9010 35th Ave. S.W. (Phone: 684-7455)

At Footprints press time, an exact schedule was being assembled. But here's a smattering of the day's major events:

* Totem Theatre will perform an original piece developed by **Karen Kinch** and **Ada McCallister** and based on West Seattle history. There will be two

performances each at the West Seattle and Southwest branches.

* Schmitz Park Elementary School students will demonstrate unicycling at the West Seattle branch.

* Children can write and illustrate their own books, made from blank pages bound with tagboard covers, from 1 to 5 p.m. at all three branches. If the youths so choose, their work will be catalogued and become library books that anyone can check out.

* The Southwest Seattle Liberacy Coalition and the city Parks and Recreation Department will sponsor a soccerball kicking contest, with books as prizes.

* **Earl Robinson**, West Seattle singer-songwriter, will sing, play piano and reminisce at the West Seattle branch.

* **Robert Woodward**, history professor at Seattle Pacific University, will speak at noon at the West Seattle branch on the importance of local history.

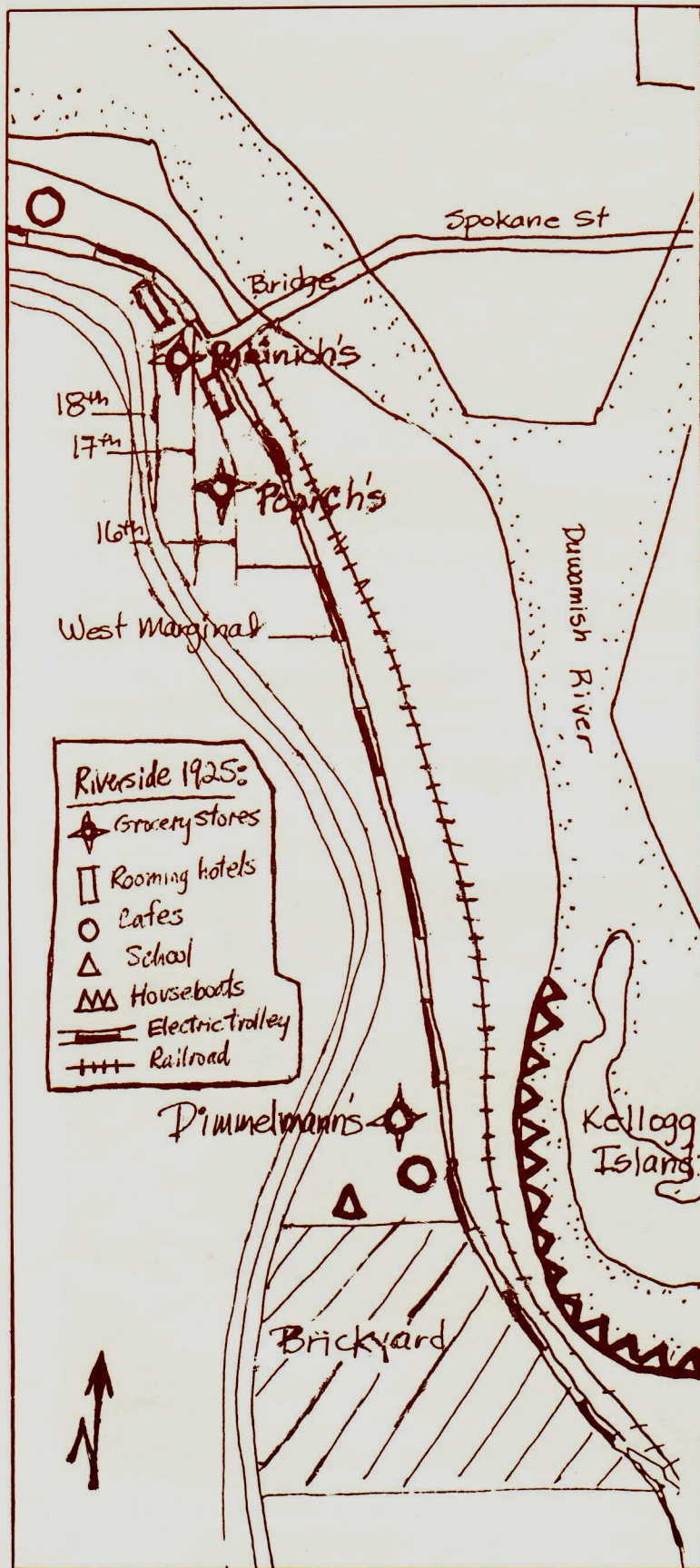
To help out, our society will loan our public-address system and record the event with the video camera we acquired last fall.

Eventually, the West Seattle branch will offer an ongoing oral history series, for which our society will offer assistance.



Snowy scene in 1916

Some local history buffs know that Seattle was hit by a big snow in 1916. But can you figure out the location of this photo? Here's a hint: Identify the large building in the middle-right, next to the water. The answer is on page 8.



DO YOU REMEMBER RIVERSIDE?

Many who live in West Seattle and White Center don't know where Riverside is.

Actually, they do know, but they just don't know that that's its name.

Every time you drive or ride a bus over the West Seattle Bridge and look down at the small residential area at the foot of the east side of Pigeon Point, you're looking at Riverside.

Its heyday was 1910 to 1960, before the Fauntleroy Expressway (the eastern end of the West Seattle Bridge) bypassed the Riverside and Youngstown neighborhoods.

Deb Barker, a board member of our society, is a graduate student in the University of Washington Department of Urban Design and Planning.

Her master's thesis will focus on Riverside, and she wants to hear from people who have memories of that neighborhood.

News clippings and photographs would be especially useful.

She's especially fascinated by the links between Riverside and the industries along the Duwamish River.

Last summer, Barker conducted preliminary research on Riverside cabins.

Anyone wishing to assist her can write her at 5226 38th Ave. S.W., Seattle, WA 98126, or call her at 935-3592 and leave a message.



Young (and a few older) members of Alki Congregational Church gathered for the above photo in the mid-1920s. JoAn Schmitz Fulton, who owns the photo, is the blonde-haired tyke in the second row from the bottom, third from the left.

FACES TO ADORN WEATHER WATCH

Who's that shy-looking boy with the knickers in the front row?

He's among 30 unidentified people in the above photo, which shows about 72 members of the Alki Congregational Church in the mid-1920s.

The photo, owned by JoAn Schmitz Fulton, is among several photos to be reproduced in a steel column at the Weather Watch Park at Beach Drive Southwest and Southwest Carroll Street.

The park, the brainchild of West Seattle artist and society member Lezlie Jane, is at the site where the South Alki mosquito-fleet landing operated 75 years ago.

Featured at the 225-square-foot park will be a bench, an historical column with maps and photos, and a weathervane.

The surface will be paved with engraved bricks. Spaces are still available for purchase, at one line for \$45 and two lines for \$65 (20 letter spaces per line).

The project is well under way. Jane, who has worked with the city Engineering

Department to complete the project, intends to finish it this spring.

Jane can be reached at 707 S. Snoqualmie St., #3C, Seattle, WA 98108, or by calling her at 938-4922.

Fulton and others have identified more than half of the people in the above photo. Anyone who can put a name to an unidentified face should call Fulton at 935-1018.

The identified names, roughly from left to right, in rows from bottom to top, are:

Row one: ?, Lillian Ann Bendar, ?, ?, ?, ?,

Mabel Andesen, ?, ?, ?, ?, ?, Janet Hartman.

Row two: Mrs. Kuhn, ?, JoAn Schmitz, Lucy

Boyd, ?, Lois Fuller, Charlotte Smith, Mabel

Andersen, ?, ?, Margaret Aiken (?), Maryann

Jones, Emmy Hartman Jr. **Row three:** Mr.

Anderson, Mrs. Anderson, ?, Shirley McLellan, ?,

Geraldine Ross, Claudia Pugh, ?, Janet Aiken,

Jeannie McDonald, Marg Aiken, Betty Bauch,

Helen Svendsen. **Row four:** ?, Ralph Smith,

Frank Alger, ?, Frank Close Schmitz, Jack Wheat,

Marion Kuhn, Amy Moore, Zelma Johnson, Theo

Terry, ?, Bryn Svendsen, Frances Izzard, June

Anderson, Mrs. Fuller. **Row five:** Wilfred

Alger, Jim Dobbs, ?, ?, Sid Svendsen, ?, ?, ?,

Howard Stansbury, ?, ?, ?, ?, Theron Van Patton,

John Fuller ?, Turner Kuhn, ?

Obituaries

Willard Rhodes, society member #125, died March 29, 1991, at the age of 85. He was a pioneer White Center banker and civic activist, having chaired the campaign to build the Salvation Army Pool and headed up the Arbor Heights Swim Club.

Alan Wylde, society member #64, died Oct. 19, 1990, at the age of 90. A lifelong West Seattle resident, Wylde was secretary-treasurer of Novelty Flour Mill (the site of the present Salty's on Alki restaurant) and had keen interests in sailing and the outdoors.

Picnic coming June 30

Our society's Third Annual Membership Picnic will be held from 1 to 5 p.m. Sunday, June 30, at Lincoln Park.

Thanks to the early-to-rise dedication of Vice President and Picnic Chair **Carol Vincent**, who signed us up at 6 a.m. on March 1, we will get the highly sought-after Site #5, next to the wading pool at the north end of the park.

More details on the event will be forthcoming in the next Footprints. Meanwhile, mark the date on your calendars!

Thanks for the memories

Morey Skaret, a society member with extensive careers in the Seattle police, state Fisheries Department and U.S. Coast Guard under his belt, was the subject of a lengthy write-up in the Jan. 10, 1991, Seattle Times.

The story by **Don Duncan** profiled the 77-year-old Skaret and three of his childhood buddies (**Melvin Stewart**, **Austin Moe** and **Roy Goodwin**), centering on their experiences during the Depression.

"You'd go to anyone's house during the Depression, and when dinner time came around, the mother would set a place for you and ask you to stay," Skaret said in the story.

We'll be the host

Our society's Executive Board has invited the Association of King County Historical Organizations (AKCHO) to hold its monthly meeting at South Seattle Community College on Tuesday, Nov. 26.

As host for the meeting, our society will display photos and other materials from our collection.

Board member **Bob Sumbardo** is our society's official representative at AKCHO meetings for 1991.

Mark the park

Clark Bathum, bo'sun of the Sea Scout training vessel Yankee Clipper, is in the initial stages of a project to place an historic marker at the site of the old Luna Park, the short-lived amusement center.

Luna Park operated at Duwamish Head from 1907 to 1913, and its natatorium was destroyed by fire in 1931.

The service project is part of Bathum's effort to become a quartermaster, the highest rank in Sea Scouts. The Yankee Clipper is sponsored by the West Seattle Lions Club.

Bathum can be contacted at 1209 N.W. 120th St., Seattle, WA 98177, or by calling 362-2665.

New home, same phone

Society President **Clay Eals** has a new address: 4310-1/2 S.W. Raymond St., Seattle, WA 98136. The home phone is the same: 935-7515.

Photo finish

The photo on page 5, shot by the Simmer studio and donated by **Virginia Slate Eals**, is looking westward at Alki Point from midway up the Admiral bluff. The building at mid-right is the Alki Bathing Pavilion, constructed in 1910-11.

FOOTPRINTS

(Editor: Clay Eals)

Newsletter of the Southwest Seattle Historical Society
c/o South Seattle Community College
6000 16th Ave. S.W., Seattle, WA 98106

NON-PROFIT
ORGANIZATION
U.S. POSTAGE
PAID
SEATTLE, WA
PERMIT NO. 4960