

*Preserving the Belvedere
View Point
Totem Pole*





The original 25-foot totem pole at Belvedere View Point was a gift to the city in the 1930s from J.E. “Daddy” Standley, owner of Ye Olde Curiosity Shop on the downtown waterfront and a booster of the viewpoint, from his collection.

It was carved by Haida Indians from British Columbia.

Board Accepts Totem Pole For West Seattle

Members of the Seattle Park Board today accepted the offer of J. E. (Daddy) Standley for an eighteen-foot carved Indian totem pole to be erected in Belvidere Park, near 37th Avenue Southwest and Admiral Way.

Standley, proprietor of Ye Olde Curiosity Shop in Alaskan Way, pointed out to the board it may be almost a year before Seattle's great landmark, the totem pole in Pioneer Square, will be replaced, after being removed because of decay and fire.

There is no city in America that affords such a magnificent scene of harbor, city and mountains as this view point in West Seattle," Standley said, "and I hope the Park Board accepts my gift."

Park Department officials said they will accept the gift formally after preliminary work for installation of the pole is completed.

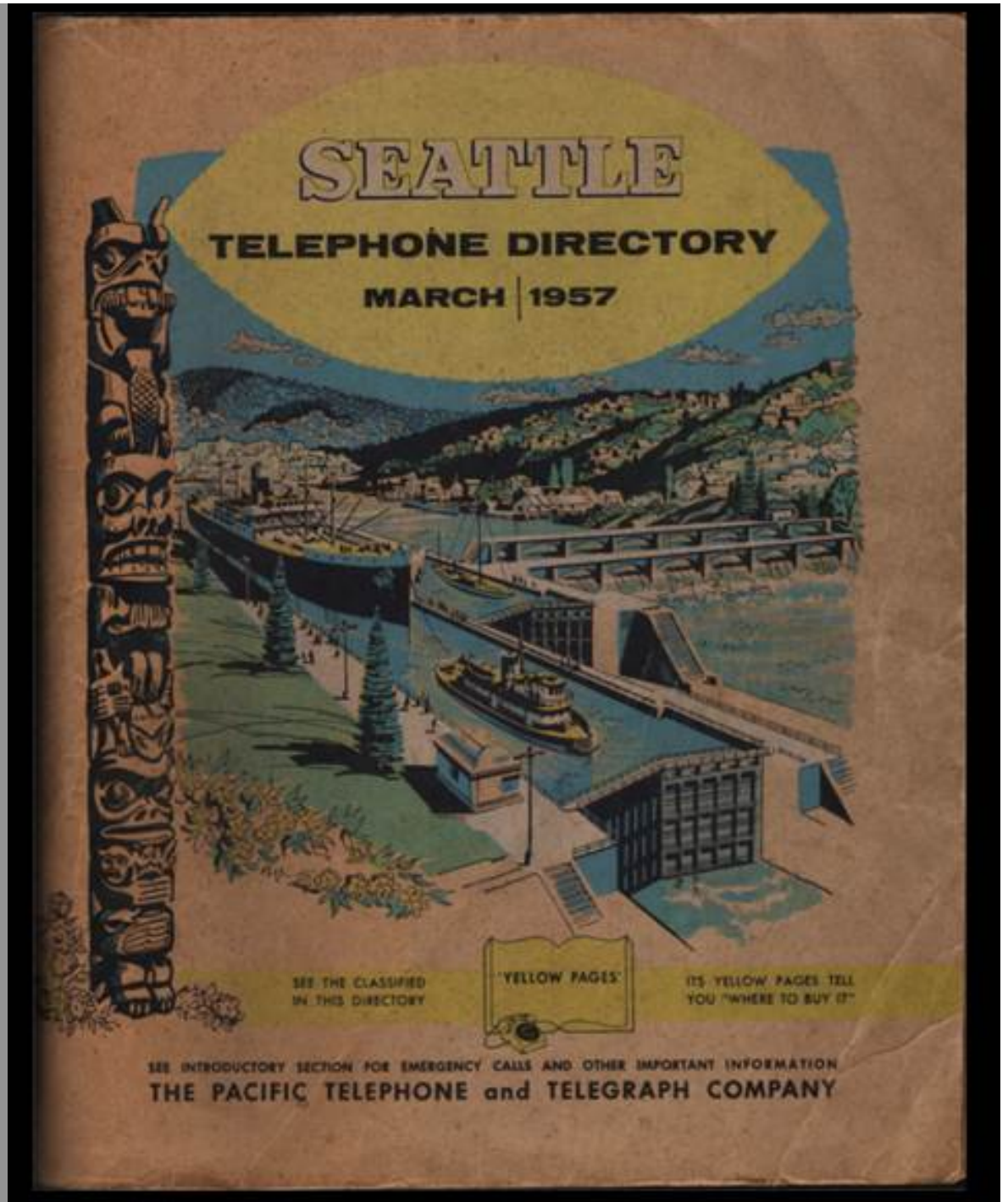
The pole was carved by King George Indians of British Columbia, Standley said.

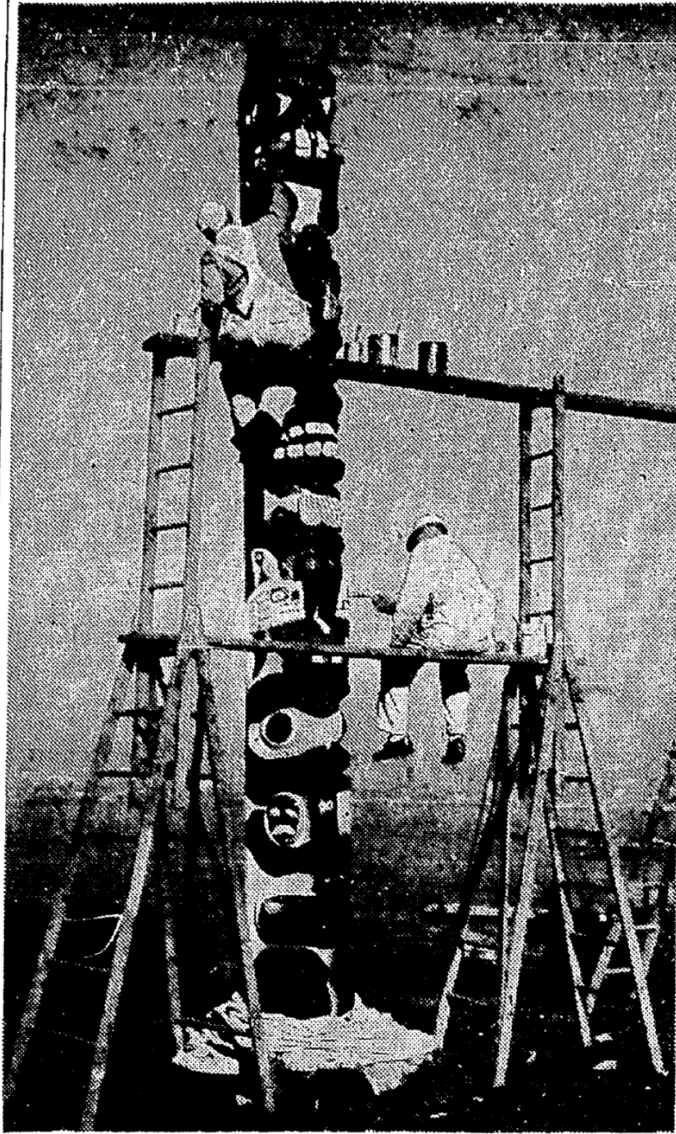
Two weeks ago, the board accepted donation of a twenty-foot totem pole from the Daughters of the American Revolution. This pole has been installed in the northeast corner of Woodland Park.



It became famous from use
on postcards ...

... and on
telephone
directories.

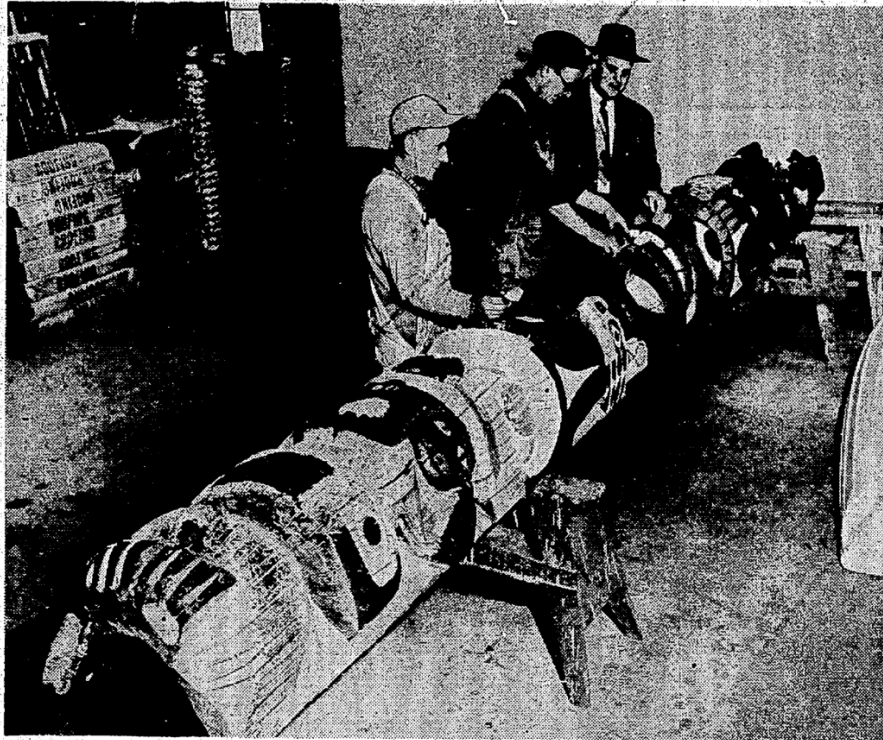




FACE-LIFTING FOR TOTEM: Indians who years ago carved this 25-foot totem pole never came back to repaint it, so John Dawson (top) and Louis Delmar, Park Department employes, tackled the job. The pole is in Belvedere Park, West Seattle, on a bluff at Admiral Way and 36th Avenue Southwest. The pole is believed to have been carved by the Haida Indian Tribe of the Queen Charlotte Islands. The figure of a beaver holding a stick in its mouth, at the top of the totem, identifies the clan which owned it. A memorial pole, it probably was carved originally by the clan in memory of a deceased relative. The carved figures represent family legends. —Photo by Bob and Ira Spring.

It was
spruced
up in
1949

...



WORN TOTEM: Park Department experts today checked the damage done by rain, sun and wind to the totem pole which, for 20 years, has stood in West Seattle's Belvidere Park. From left—Sid Price, the department's paint foreman; Jon Abrahamson, carpenter foreman, and William Hall, chief of plans and construction. It is hoped the totem, cracked and rotted, can be repaired by summer for the tourist season.

... and
taken
down
and
fixed
up in
1958.

Totem-Pole Landmark to Have 'Surgery'

The big totem pole that for 20 years has been a landmark and tourist attraction in West Seattle's Belvidere Park is in the "hospital."

Rain, sun and wind have left their marks on the spectacular Indian carving—marks so deep that even the Park Department's expert "sugeons" wonder if they can be repaired.

The 30-foot cedar pole, estimated to be some 100 years old, is resting on a couple of sawhorses in the carpenter shop at Woodland Park. Its paint, refurbished a few years ago, still is bright, but the carving is covered with deep cracks. The nose and much of the face of the grotesque

beaver figure atop the pole have rotted away.

"Wearing to Pieces"

"The pole just was wearing to pieces," said Jon Abrahamson, carpenter foreman for the Park Department. "We decided to take it down and see if we couldn't put it back together."

The pole was one of many totems collected by the late J. E. (Daddy) Standley, who established and operated Seattle's famed Ye Olde Curiosity Shop at Colman Ferry Terminal.

Standley, who died in 1940, gave the pole to the Park Department about three years earlier.

It was decided to mount the pole in Belvidere Park, a

viewpoint at Admiral Way and Ogla Street, not far from Standley's home, which he called Totem Place, on Palm Avenue.

Lure for Photographers

Through the years, the Beaver Clan pole, of authentic Bella Cooola design, probably has been one of the most photographed landmarks in the city, said William Hall, chief of plans and construction for the Park Department.

The pole was used as part of the design on the cover of last year's Seattle telephone directory.

"It's a beautiful carving," Hall said. "We don't want to lose it."

Abrahamson said the repair job will be a "ticklish one, but he hopes the totem can be placed back on its pedestal in the park in time to attract a good crop of the coming summer's tourists."

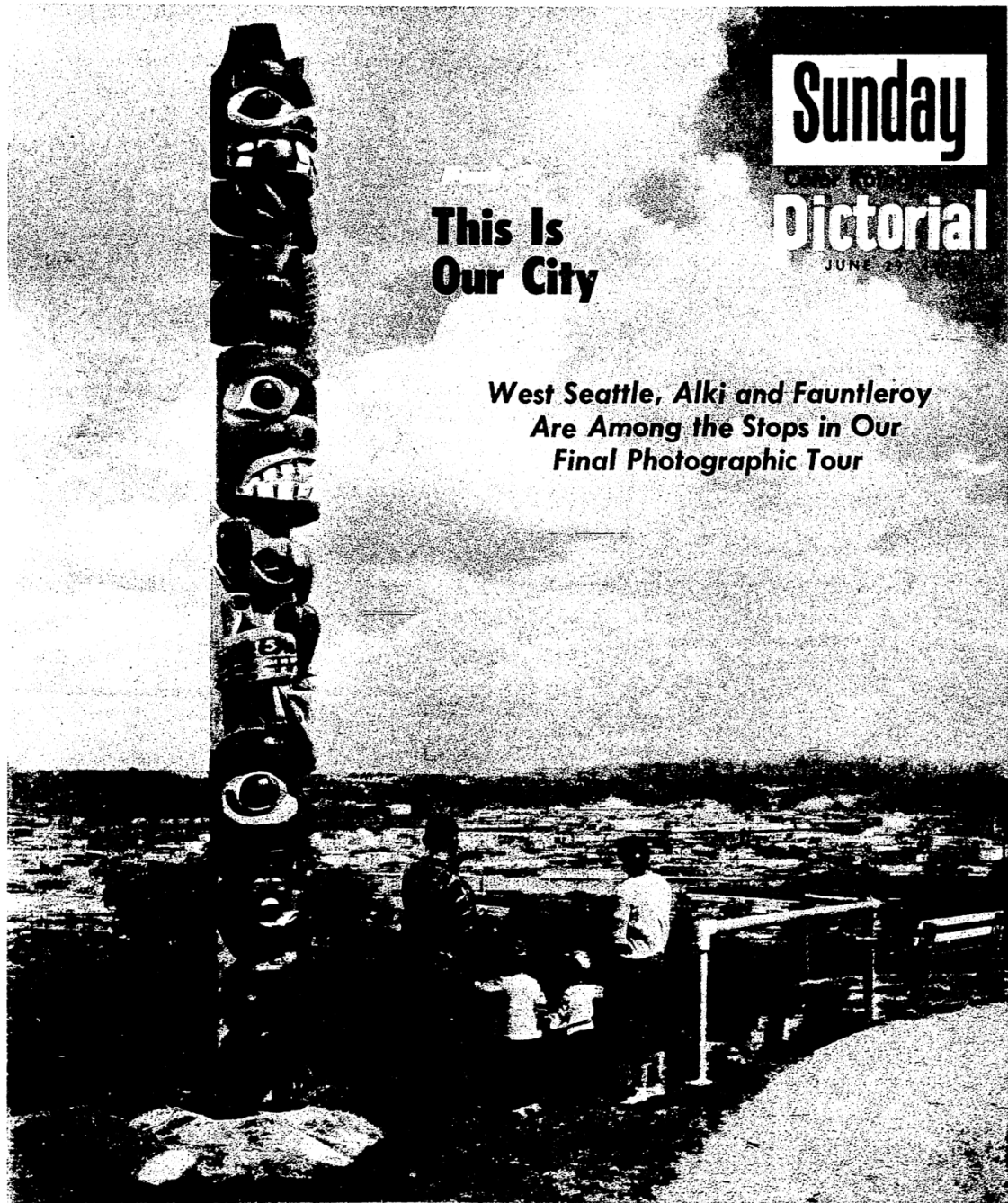
Retired 'Y' Official Dies

WHITE PLAINS, N. Y., March 27. — (AP)—Arthur N. Cotton, 85, a retired national official of the Young Men's Christian Association and the Boy Scouts of America, died today in a nursing home.



IN PLACE AGAIN: Park Department workmen today replaced a 100-year-old totem pole in West Seattle's Belvidere Park on Admiral Way after several weeks of "major surgery" to repair the landmark. The 35-foot tourist attraction, painted in bright new colors, weighs about 350 pounds. Jon Abrahamson, carpenter foreman, mixed a compound to seal deep cracks in the weathered pole. The Park Department had been uncertain whether the pole could be saved when it was removed March 27 for the repair project.

come in and get a FREE copy of April Reader



Sunday

Pictorial

JUNE 23

**This Is
Our City**

*West Seattle, Alki and Fauntleroy
Are Among the Stops in Our
Final Photographic Tour*

June
1958

West Seattle Landmark: 100-YEAR-OLD TOTEM POLE, RECENTLY REPAINTED AND REPAIRED, IN BELVIDERE PARK

Times Photo by Roy Scully



Foot-Loose in Seattle

Small W. Seattle Park Has Beautiful Vista

By JANICE KRENMAYR

IN this age of wheels and wings, we tend to forget that we have two good ambulatory devices to take us around to enjoy the scenery.

Walking need not be a chore. It can be real outdoor recreation. Seattle, queen among vista cities, offers an endless variety of walks with marvelous views, a choice of terrain, and in many places, nostalgic hints of its robust past.

There is no better vista point than the West Seattle totem pole, so for our first walk, let's make it for the "softy" who wants mainly to sit and dream over a spectacular view.

On the next clear day, follow the directions given to reach the totem pole. But no fair peeking at the view. You have to earn it, first.

If you have visited the totem pole before, you may never have noticed cozy little Belvedere Park behind you; a small triangle bordered by South-west Olga Street, 37th Avenue South-

west and Admiral Way. At least 20 minutes will be enough to circle it.

It is a playground for neighborhood youngsters, and they and nearby residents, refer to the park as "Tincan Park"—a hang-over from the days when the tract was littered with refuse.

SINCE 1929, when the area was acquired, the park has been called Belvedere, but a strange situation prevails. No official record of that name seems to exist.

A city ordinance was passed January 13, 1936, as a result of a petition of certain residents, to change the name of Tincan Park to American Legion Memorial Park. Officially, that would seem to be the park's name.

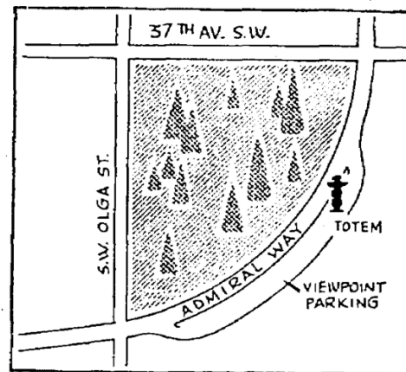
How did the name Belvedere come into being? The Seattle Park Board, searching old records and ordinances, found no clue. But the name Belvedere is used everywhere—on city maps and official descriptions. Perhaps the street of the same name, a block away, was the influence.

But again, the spelling differs. The street name is spelled Belvidere, and maps and news accounts spell the park name with the "i".

Park Board records, however, use the "e". Belvedere, an Italian architectural term meaning "commanding a fine view, or terrace," seems more appropriate for the site.

This is a view one can return to many times. A clean sweep from the left gives you Seattle's hills and skyline, with Smith Tower an anchoring landmark.

THE colorful totem pole which towers over the spot was donated in 1938 by J. E. (Daddy) Standley, who established and operated the Ye Olde



Curiosity Shop at Colman Ferry Terminal.

Made by the Bella Coola Indians of Vancouver Island, the pole is said to follow the Beaver Clan tribal symbols.

Here again is confusion. The pole has grown older and taller with the years!

Standley originally was quoted as saying the 25-foot pole was carved in 1901. In 1958, when the pole underwent "surgery" because of damage and loss of color from exposure to weather, it was described as 30 feet and SOME 100 years old.

Later, when Park Department workmen replaced the pole, the report then had it 35 feet tall and definitely 100 years old!

Today's Cover

THE corral on today's Magazine cover is at Bolster in Meyers Creek Valley a few miles north of Chesaw, Okanogan County. Parker McAllister, Times staff artist, found this scene on the L. C. Pickering farm, where a saddle on the fence was an invitation to ride.

The Pickerings own 2,700 acres, have a Forest Service permit to run cattle on government land, and with their sons have land on both sides of the Canada-United States border.

WALKING TIME: 15-20 minutes.

TRANSPORTATION (By Bus): Admiral Way or California and Alaska Bus No. 15 on First Avenue, going south. Get off at Olga Street (or ask the driver for the Totem Pole). (By Car): Admiral Way, from north or south, to Olga Street or 37th Avenue Southwest.

PARKING: Off-street area for vista-viewers, between the two streets named.

CLOTHING: Anything goes.

Families (such as the Nickels clan at right in 1963) loved to pose for photos in front of it.

(Greg, our former mayor, is the middle boy.)



In 1966,
the original
totem pole
was deemed
beyond repair

-- and its
fate was
depicted with
insensitivity.

City Totem Pole Gone to Happy Hunting Ground



POLE THEN

The totem pole at the Admiral Way viewpoint, a city landmark since 1939, is gone for good.

Edward J. Johnson, city park superintendent, said the pole was found to be decayed beyond repair after it was taken down about the first of the year for rehabilitation.

"We hope," Johnson said, "that someone has a replacement totem pole or will make us one."

The 25-foot pole was presented to the city by J. E. (Daddy) Standley of Ye Olde Curiosity Shop on the waterfront. It was carved by Bella Bella Indians of the Queen Charlotte Islands.

The support of the hollowed-out totem still stands at the viewpoint. Johnson said it would be taken down if no replacement totem pole is found.

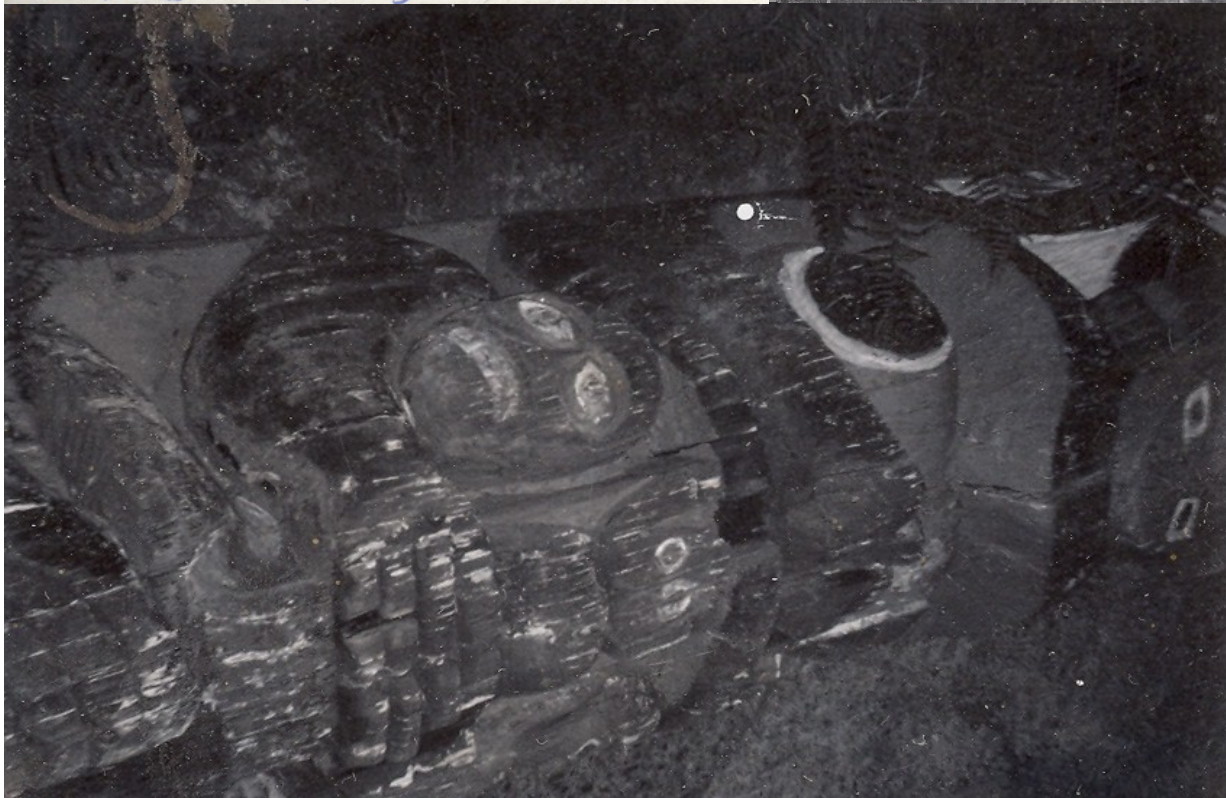
The totem pole was one of the most-photographed objects in Seattle and appears on several postcards.



POLE NOW



Old Pole Top figure is Beaver



The totem pole's replacement was carved from a cedar log cut from Schmitz Park.



Robert Fleischman and Michael Morgan, both Boeing engineers, donated some 300 hours of work carving the new totem.

III



Log ready for carving

First, the log was readied for carving.

Next, rubbings were taken using newsprint, to create a pattern.



Rubbing taken on newsprint

12 Inked lines are



Roughed out with chain saw

Patterns were transferred, and the rough work was done with chain saws.

17



Finishing work was done to honor the old ways of carving, using hand tools such as hatchets, chisels and gouges.

Next, Finishing with hatchets, chisels, & gouges

VI



Painting next

Once the carving
was finished ...



... the pole was ready
to be painted ...



... and other
volunteers
joined in.

West Seattle Totem Pole Taking Shape

A new homegrown, home-made totem pole for the Admiral Way viewpoint in West Seattle may be in place within the next two months, the Park Department said today.

The old 25-foot pole, donated by J. E. Standley of Ye Olde Curiosity Shop and carved by Bella Bella Indians, succumbed to rot.

Many persons volunteered to carve a new one. The Park Department selected two men and gave them a tree from Schmitz Park.

The new pole will be patterned after the old one.

At present, the pole is about one third completed and should be finished in a month. At least another month is needed for painting and weatherproofing.

The carvers asked to remain anonymous so they can work on the totem pole without interference.



Totem for Admiral Way

Two Boeing engineers, Robert Fleischman, left, and Michael Morgan, last evening painted a 25-foot totem pole they carved for display at the Admiral Way Viewpoint, Southwest Admiral Way and Southwest Olga Street. Edna Stilwell helped them paint. The pole will be dedicated at 7:30 o'clock the evening of August 10. It will replace an old pole which was taken down last winter after it was found to be decayed beyond repair. Neither Morgan, 2122 N. 53rd St., nor Fleischman, 5107 48th Av. N. E., had carved a totem before, but both are experienced wood carvers. They have worked evenings since mid-May whittling down a cedar log chopped from Schmitz Park in West Seattle by the Park Department. They were assisted by their wives.

VII



Done!

Finally, the new pole was ready to take its place at Belvedere View Point along Admiral Way.

WEST SEATTLE HERALD

Vol. XLIII, No. 33.

Distributed to West Seattle Homes Every Thursday

Thursday, August 18, 1966

Bonnell Seeks Position No. 2



Lorraine Bonnell announces her candidacy for State Representative, Position No. 2, Democrat, in the 31st Legislative District, to which she filed on July 25.

Long active in the Democratic Party, she has served on the Washington State Democratic Central Committee, for six years was State Secretary for Washington State Federation of Democratic Women's Clubs, the past chairman of the 31st District Democratic Precinct Organization, and former President of the Evergreen Democratic Women's Clubs, past chairman of the

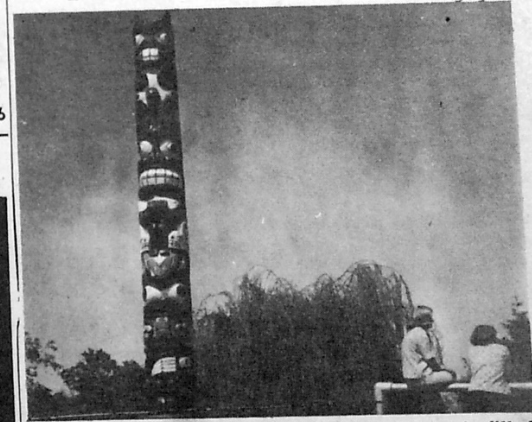
Dinner Precedes Totem Dedication



The program of the West Seattle Kiwanis Club's August 10 meeting was turned over to dignitaries and principals in the dedication of West Seattle's new Totem Pole at View Point overlooking the city and Elliott Bay from Admiral Way. At the head table for the prededication program were (l. to r.) City Councilman Ted Best, Park Commissioner Waldo Dahl, Park Supt. Ed Johnson, Kiwanis President Bruce Landry, Exec. Secretary of the W.S. Chamber of Commerce, Normie Beers, Master of Ceremonies; Mr. and Mrs. Mike Morgan (he, along with fellow Boeing engineer Bob Fleischman, carved the totem;

Mrs. Morgan produced the design); Dedication Chairman Dick Barnecut and Mrs. Barnecut; Executive assistant to Mayor Braman, Ken Lothian, and Mrs. Lothian. The program and dedication were under the auspices of the West Seattle Chamber of Commerce. At the unveiling ceremony music was supplied by the El Toreador Drum and Bugle Corps. Hi-Yu Princess Cindy Smith pulled the cord dropping the plastic covering from the totem. A blessing was asked by Rev. Otto Jonas of the Fauntleroy Community Church. Park Commissioner Dahl expressed the thanks of the park department to the Morgans. —Marier photo.

New Totem on Admiral



The void at the Admiral Way viewpoint is filled. For years, the old totem pole stood as a landmark, then the ravages of time took their toll, and the old pole had to come down. Recently a brand new totem, pictured above, was dedicated as a new landmark at the site of the viewpoint which presents one of the world's great vistas, the city of Seattle, named after Chief Sealth, and rich in Indian tradition — Herald photo.

Public Invited

Counselling Consultant WESCOYA Speaker Tues.

West Seattle will get a chance to meet its new Family Counseling Service Community Consultant at 7:45 p.m., Tuesday night (Aug. 23) at the American Legion Hall.

Don Bird will speak to members of the West Seattle Council on Youth Affairs (WESCOYA) and other inter-

Tom Smith in

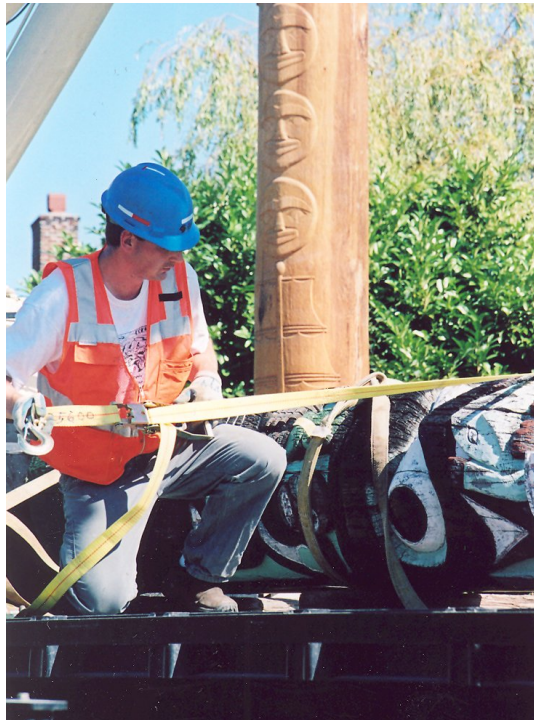
It was unveiled with great fanfare, preceded by a special dinner to honor the carvers.





By 2006,
the pole was
weather-ravaged
and bug-infested.

The paint was all but
completely faded.



The Southwest Seattle Historical Society embarked upon a preservation effort to save and restore this cherished piece of West Seattle history.



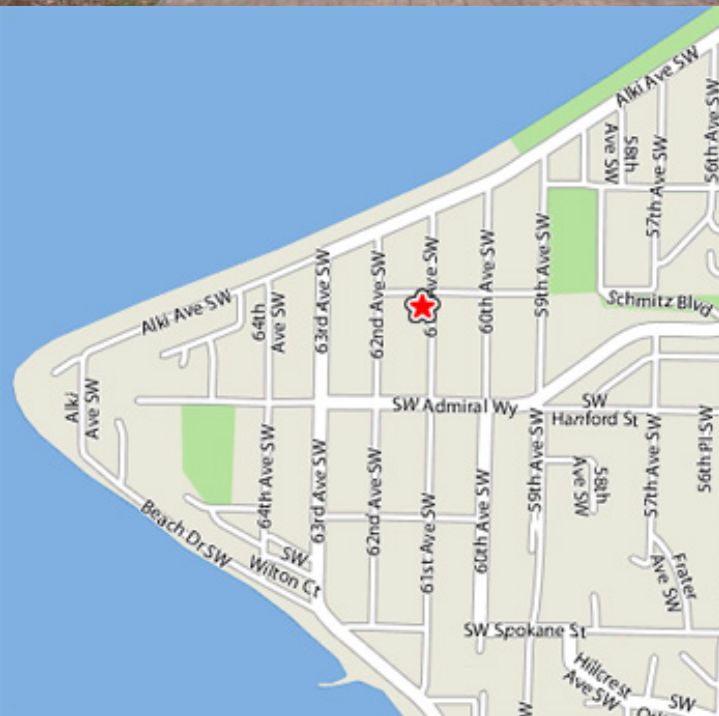


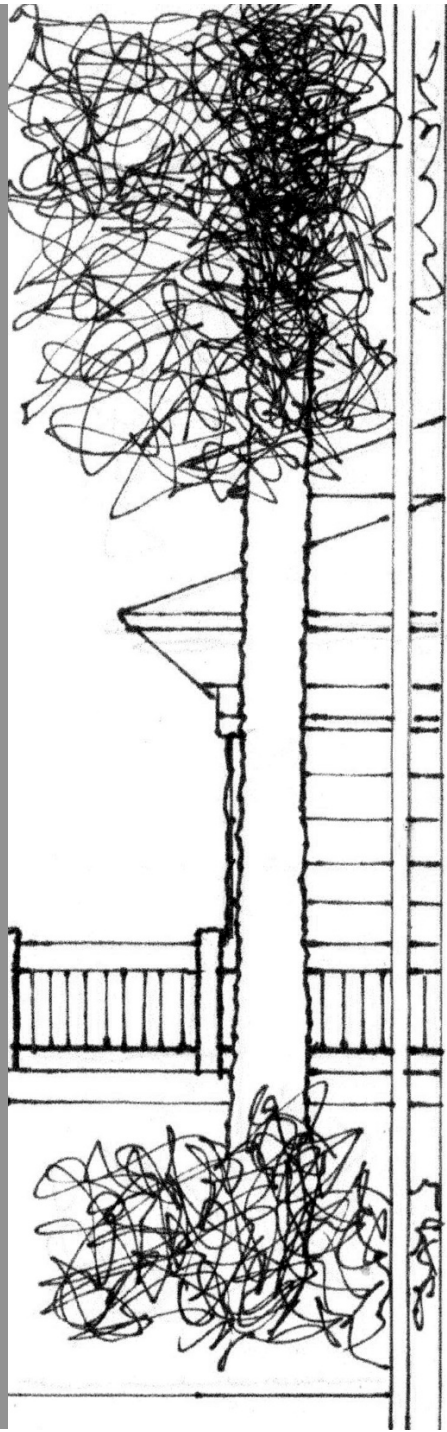
Alki Lumber
donated labor and
equipment to move
the pole to the
Southwest Seattle
Historical Society's
Log House Museum.



And now, the pole is being restored at Artech of Seattle.

The vision is for the pole to be raised once again at the Log House Museum, one block from Alki Beach – and to honor and tell the story of totem poles in West Seattle.

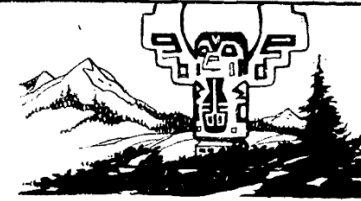






DON DUNCAN:

About Our Totem Pole Syndrome



An architect friend laughingly refers to "Seattle's totem-pole syndrome," an affliction we proudly bear.

Look around, he says. At schools and restaurants, viewpoints and shopping centers, hotels and homes, view-points and shopping centers, restaurants and mantelpieces. And don't forget the name of our hockey team, The Totems.

"We are," my architect friend continues, "captives of a myth that facts cannot dispel."

The myth, he says, is that totems are indigenous to the culture of this state's Indians. Our Indians were fish catchers, dugout-canoe makers and basket weavers. They did not carve totems.

The architect chortles heartily over the "historic" totem pole in Pioneer Square. It is, he declares, a remake of a Tingit pole originally brought here in 1887 and copied, slightly larger than life, after it fell victim to decay and hoodlums in 1938.

To publish the architect's name might bring reprisals, such as having a totem pole burned on his lawn. But what lover of totem poles would want to waste one on an ingrate anyway?

THERE IS NO DOUBT we are hooked on totem poles, even though the great Indian carvers were Tingits and Haidas of Alaska, and Tsimshians, Kwakiutls and Bella Coolas of British Columbia.

The art reached its zenith among the natives between 1840 and 1888, after Europeans introduced steel tools. These proved far more satisfactory than stone-ax whittling.

Seattle has, by dint of its flourishing tourist business,

'Guidelines To Adoption' Topic Of Conference

Four Pupils To Perform At Family Concerts

An institute on "Guidelines to Adoption" will be presented October 20 and 21 in Eagleson Hall, 1417 N. E. 42nd St., by the University of Washington School of Social Work.

The conference will focus on preparation of a child for separation from his own family, a foster family and from the social worker.

Lecturers will include Dr. S. Harold Kaufman, psychiatrist from the Stimson Medical Center, and Helen Robinson, adoption consultant for the State Department of Public Assistance.

The Office of Short Courses has charge of registration.

Four Seattle high school music pupils have been named Gold Medal Award winners and will perform at two family concerts with the Seattle Symphony October 30 and November 6. Jack E. Shaeffer, Seattle Public Schools director of music, announced.

The pupils are Marie Gore, cello, and Gary Eneberg, French horn, both of Ballard High School; Kathy Bell, cello, Sealth High School, and Steve Reynolds, violin, West Seattle High School.

They will join with the symphony in playing Enesco's Romanian Rhapsody No. 2. They will be coached by Henry Siegl, Seattle Symphony conductor.



built a considerable totem-pole industry. Souvenir shops are laden with totems, ranging from pretty good to goshawful.

Indian Arts and Crafts here is the world's largest wholesaler of Indian-made totems. We proudly count among the residents of Puget Sound some of the world's foremost carvers—Dudley Carter, Otis Baxter and Joseph Hillaire.

Cub and Boy Scouts carve totems as projects. Seattle University sponsored a totem-pole-carving contest.

And we accepted, straight-faced, the fine new totem pole at the West Seattle viewpoint—the work of two Boeing engineers and their wives.

Those who hanker to immerse themselves in honest-to-goodness Indian carving have only to journey to Stanley Park, Vancouver; Thunderbird Park, Victoria, or the Indian villages near the Skeena River in Northern British Columbia.

Victoria boasts the world's tallest totem pole (127 feet) in Beacon Hill Park. Ontario's Provincial Museum has the runnerup (101 feet).

NEAH BAY HAS THE largest thunderbird in the state (Baxter carved), mounted on a 22½-foot carved whale. The last New York World's Fair featured a Carter carving—nice, but very small compared with the massive carving he did on location for the San Francisco World's Fair.

Certainly the "syndrome" has burst its natural geographic bounds. Queen Elizabeth has been presented with two totems—one from the Canadian government, another from President Johnson. How these fit with the decor of Buckingham Palace is anybody's guess.

An imposing totem pole is in a public square in Buenos Aires, Argentina. Another occupies a place of honor near the Halls of Montezuma in Chapultepec Park, Mexico City.

Hillaire's superb totem pole, dedicated with much fanfare a few years ago in our sibling city, Kobe, Japan, touched off a spate of Japanese imitations. Totems now flourish in Kobe gardens, parks, next to fences and on the slopes of the Kobe gardens, parks, next to fences and on the slopes of nearby Mount Rokko.

To be sure, the figures have slanted eyes and hollow skin. But they are unmistakably Indian inspired. Japan, as you might have guessed, is an exporter of totems.

FEW AMATEUR TOTEM-POLE devotees—frequently with garishly painted monstrosities in their homes—know anything of the legends that inspired the early carvers.

They miss the significance of thunderbirds, ravens, eagles, bears, sea otters, double-headed serpents and whales.

Totems originally served definite purposes. Mortuary types guarded graves. Historical ones were dedicated to great tribal experiences. Memorial totems commemorated a great event in the life of an individual Indian.

It may well be that the key to totem-pole collecting is our feeble attempt to lay hold of a chunk of the past, to put down roots in shifting soils.

Or, probably closer to the mark, it simply is a desire to brighten our often drab lives. You don't have to be a Buddhist to appreciate an exquisitely carved Buddha contemplating his navel.

Anyway, it is a harmless syndrome. And, without a totem pole every once in a while, the top of this column would be downright naked.

Frederick

DIVISION OF MARS

PERMANENTLY PRE

WHITE SHIRTS B

\$5 AN

These new cotton Vanopress shirts bring
 ment press to the man who prefers an all c
 has the press put in and the wrinkles out
 sleeve style, with semi-spread collar. Whit

furnishings, mod's shop, 1011 First Ave.